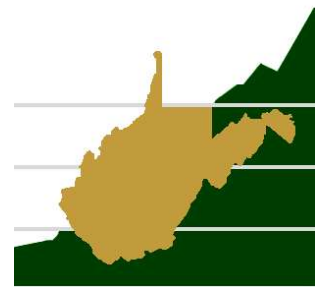


West Virginia Investment Management Board

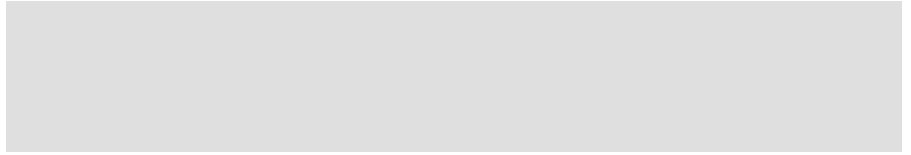
2018 ANNUAL REPORT





ANNUAL REPORT

Year Ended June 30, 2018



Our mission is to exercise our best independent judgment in providing prudent and professional investment management for the exclusive benefit of the beneficiaries.

Table of Contents

Introduction

Message from Chairman.....	1
Message from Executive Director	2

Organization

Board of Trustees	4
Representatives and Committee Members	5
Staff Members	6
Organizational History	7
Statutory Mandate	8
Administrative Mandate	9
Organization Chart	10
Investment Philosophy	11

Investment Objectives and Financial Highlights

Equity Pool.....	12
Short-Term Fixed Income Pool	16
Fixed Income Pool.....	18
TIPS Pool	21
Special Purpose Pool: TRS Annuity.....	23
Private Markets Pool	24
Hedge Fund Pool.....	26

Table of Contents

Participant Plans

Participant Plans Overview	28
Deputy Sheriff’s Retirement System	29
Emergency Medical Services Retirement System	31
Judges’ Retirement System	33
Municipal Police Officers’ and Firefighters’ Retirement System	35
Municipal Policemen’s or Firemen’s Pension and Relief Funds	37
Public Employees’ Retirement System	38
State Police Death, Disability and Retirement Fund	40
State Police Retirement System.....	42
Teachers’ Retirement System.....	44
Board of Risk and Insurance Management.....	46
Coal Workers’ Pneumoconiosis Fund	48
Public Employees Insurance Agency	50
West Virginia Retiree Health Benefit Trust Fund	52
Workers’ Compensation Old Fund.....	54
Workers’ Compensation Self-Insured Employer Guaranty Risk Pool	56
Workers’ Compensation Self-Insured Employer Security Risk Pool.....	58
Workers’ Compensation Uninsured Employers’ Fund.....	60
Berkeley County Development Authority	62
Revenue Shortfall Reserve Fund	64
Revenue Shortfall Reserve Fund – Part B	66
West Virginia Department of Environmental Protection Agency	68
West Virginia Department of Environmental Protection Trust	70
West Virginia Prepaid Tuition Trust Fund	72
Wildlife Endowment Fund	74

Definition of Terms and Abbreviations

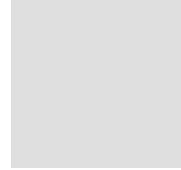
The following terms and abbreviations are used throughout the West Virginia Investment Management Board's Annual Report and are listed here to help with the overall understanding and readability of this document.

Allocation Committee	The Allocation Committee is a committee of the West Virginia Investment Management Board's general investment consultant, as approved by the Board, and the West Virginia Investment Management Board's four investment officers: The Executive Director, who is also the Chief Investment Officer, the Senior Investment Officer, the Fixed Income and Real Estate Investment Officer and the Private and Public Equity Investment Officer. The Allocation Committee is permitted to make adjustments within set ranges around the Strategic Allocation, based upon current market conditions and forward looking market views.
Base Allocation	The allocation between the three major asset classes – global equity, fixed income, and cash – whose purpose is to serve as return generators, or diversifiers, or some combination of both.
Board	The thirteen-member Board of Trustees that governs the West Virginia Investment Management Board.
Cap	Abbreviation for “capitalization,” referring to the size of the investment market for that particular asset style.
IMB	The “West Virginia Investment Management Board” including its Trustees, plan Representatives, Committee Members, and staff.
Neutral Target	The absolute percentage weighting assigned to an asset class or the secondary components within an allocation to which rebalancing should ultimately occur in the absence of an Allocation Committee modification.
Participant Plan (Participant)	A specific group of assets entrusted to the West Virginia Investment Management Board. Retirement plans, endowments, and insurance trusts, for example, are all Participant Plans.
Pool	Refers to the specific investment pool created and operated by the West Virginia Investment Management Board for a specific investment asset class.
Range Allocation	The Board has placed ranges (Allocation Ranges) around the Strategic Allocation in order to maintain appropriate risk controls. Allocation decisions made by the Allocation Committee are defined as the Range Allocation.
Strategic Allocation	The first level of adjustment to the Base Allocation is the principal focus of the asset allocation process and results in the Strategic Allocation. The broad types of assets considered at the Strategic Allocation level include global equities (commonly referred to as stocks), fixed income (broadly notes, bills, bonds issued by corporations and countries), real estate, private equity, and cash, as well as the opportunity set and management style of hedge funds.

Definition of Terms and Abbreviations

The following terms and abbreviations refer to the investment performance benchmarks used for comparison purposes in the Investment Objectives and Financial Highlights section.

Bloomberg Barclays U.S. Aggregate Bond	A market capitalization weighted index that includes most U. S. traded investment grade bonds.
Bloomberg Barclays U.S. TIPS	An index that measures the performance of U.S. Treasury Inflation Protected Securities.
Bloomberg Barclays U.S. Universal Bond	The index covers U.S. dollar-denominated, taxable bonds that are rated either investment-grade or below investment-grade.
Citigroup 90-Day Treasury Bill	An unmanaged index representing monthly return equivalents of yield averages of the last 3 month Treasury Bill issues.
Credit Suisse Leveraged Loan	An index designed to mirror the investable universe of the U.S. dollar-denominated leveraged loan market.
HRFI FoF	Hedge Fund Research, Inc.'s composite index of fund of funds.
MSCI ACWI ex U.S. (IMI)	A market capitalization weighted index that is designed to measure the equity market performance of developed and emerging markets. The “ ex U.S. ” qualifier indicates that the index excludes the United States markets. The “ IMI ” qualifier further limits the index to investable markets. It is maintained by MSCI Barra, formerly Morgan Stanley Capital International.
MSCI EAFE	A stock market index that is designed to measure the equity market performance of developed markets outside of the U.S. & Canada. It is maintained by MSCI Barra, formerly Morgan Stanley Capital International. The EAFE acronym stands for Europe, Australasia and Far East.
NCREIF Property Index	National Council of Real Estate Investment Fiduciaries’ property index.
Russell 2500/ Russell 3000	The Russell 2500 is an index of the 2,500 smallest companies in the Russell Investments’ Russell 3000 index which is a broad market index comprised of 3,000 publicly held U.S. companies.
S&P 500	Standard & Poor's 500 is a stock market index based on the market capitalizations of 500 large companies having common stock listed on the New York Stock Exchange or NASDAQ.



INTRODUCTION

Message from Chairman

October 30, 2018

Dear Fellow West Virginians:

On behalf of the trustees of the West Virginia Investment Management Board, I present the Board's Annual Financial Report for the fiscal year ending June 30, 2018. Please note that additional information about the Investment Management Board may be accessed electronically on its website, www.wvimb.org.

The fiscal year ending June 30, 2018, was another good year for investors as much of the world's economies saw positive developments. After last year's excellent return of 15.8 percent, the Investment Management Board continued to outperform in fiscal year 2018 returning 9.7 percent (using the Public Employees' Retirement System as a proxy for all long-term assets). This is above the target rate of return assumed by the actuary for the defined benefit pension plans. Despite recent excellent performance, the Board is mindful that it will not always be so. The world's capital markets are volatile. Impressive gains one year can be followed by sluggish growth in the next. The Board has created a long-term asset allocation plan to achieve its return goals fully cognizant that volatility is the price one pays for return on one's money. While we should enjoy the great returns this fiscal year, it is important to maintain that long-term perspective.

I wish to thank fellow trustees and the staff for their dedicated service. I commend the Board on its professionalism, commitment to the mission, and customer service.

Sincerely,



Jim Justice
Governor of the State of West Virginia
Chairman of the Board of Trustees

Message from Executive Director

October 30, 2018

It is with great pleasure that I submit the Annual Report of the West Virginia Investment Management Board (IMB). The IMB is considered an internal service fund of the State of West Virginia for financial reporting purposes and, as such, the significant financial information contained in the report is also included in the State of West Virginia's comprehensive annual financial report. The information presented in this report is the responsibility of the management of the IMB, and sufficient internal accounting controls exist to provide reasonable assurance regarding the safekeeping of assets and fair presentation of the financial statements, supporting schedules, and statistical tables. The report is also designed to comply with the reporting requirements of Chapter 12, Article 6, Section 6 of the *West Virginia Code*, as amended. This report is divided into the following sections:

- **Organization** – Contains general information regarding trustees and staff, history of the IMB, statutory mandate, administrative mandate, and investment philosophy.
- **Investment Objectives and Financial Highlights** – Outlines the more specific objectives and performance of each of the investment pools.
- **Participant Plans** – Contains a brief description of each of the participant plans whose assets are entrusted to the IMB.

Please note that the audited financial statements of the investment pools administered by the IMB and the IMB's Administrative Fund are published as a separate document. This is done to accommodate two audit opinion release dates and will also minimize the time required to download this annual report. The audited financial statements are available on the IMB website.

As an investment organization, the IMB's constant focus is the performance of its investments as it seeks to satisfy the investment needs of the beneficiaries of the participant plans entrusted to it. To a large extent, each participant plan's performance is a function of the asset classes in which it invests. As such, a review of asset class performance for the year may be helpful.

The first half of fiscal year 2018 saw synchronized growth across global markets, low inflation, strong employment, and accommodative central banks. The second half of fiscal year 2018 saw that synchronized global growth story falter as economies displayed more disparate performance. Cause and effect are notoriously difficult to pinpoint. Notable, however, were: a major overhaul of the U.S. tax system in December; a 25 percent tariff on steel and a 10 percent tariff on aluminum, which went into effect on March 23; tensions between the U.S. and China over allegations of asymmetrical trade policies and intellectual property theft; three rate increases by the U.S. Federal Reserve; and dollar appreciation relative to other currencies. Meanwhile, Brexit, an independence movement in Catalonia, and Italy's role in the European Union weighed heavy on European markets. Also, of note is the increasing importance of China's economy in the context of global markets. Its economic cycle is independent of the U.S. and its sphere of influence continues to grow. This has important implications, especially for other emerging markets, as China experienced a slowdown in growth. All told, risky asset's performance paused as the year wore on, but corporate earnings continued to rise pushing valuations down to more attractive levels. As the year comes to a close, the end of the current economic cycle may not yet be at hand. In the end, U.S. stocks were up 14.8 percent (Russell 3000) for the fiscal year, although, again, most of the run-up occurred in the first half of the year. International stocks, by comparison, were up only a modest 8.2 percent (MSCI AC World ex U.S. IMI). Fixed income, again, suffered returning (0.3) percent (Bloomberg Barclays U.S. Universal Bond), as the Fed raised rates on the strength of the economy.

The IMB enjoyed good nominal, if not relative, performance in fiscal year 2018. The best performer on a relative basis was the fixed income portfolio which outperformed its benchmark (Bloomberg Barclays U.S. Universal Bond) by 0.9 percent for the fiscal year. The domestic public equity portfolio also outperformed its benchmark (Russell 3000) by 0.2 percent, on top of a nominal performance of 15 percent. The international equity portfolio underperformed its benchmark (MSCI AC World ex U.S. IMI) by 1.5 percent, resulting in a nominal performance of 6.7 percent. (This contrasts dramatically with the extraordinary outperformance in fiscal year 2017.) Performance measurement of private market assets, which include private equity and a majority of the IMB's real estate portfolio, is fraught with measurement issues, so it is less meaningful over shorter time periods. Regardless, the private equity portfolio returned 21.3 percent and the real estate portfolio returned 9.4 percent. The hedge fund portfolio, which is intended to be a diversifying component of the entire portfolio, returned 6.4 percent, which was above its benchmark (HFRI FOF plus 1 percent) by 0.2 percent.

Message from Executive Director

The majority of assets managed by the IMB are for participants with longer time horizons. These include the defined benefit pension plans, some employment security plans and other trust assets. Still others, like Revenue Shortfall Reserve Funds A and B, have shorter time horizons of varying degrees.

Defined benefit pension plans make up approximately 80 percent of the IMB's total assets under management. For general comparison purposes, the IMB uses the Public Employees' Retirement System (PERS) as a proxy for the other pension plans because of its similarity to other statewide public pension plans throughout the nation. As of June 30, 2018, the return for PERS was 9.7 percent, net of expenses, for the fiscal year. Of greater significance is the longer-term performance. In that regard, over the five-year period ending June 30, 2018, the IMB's annualized return was 9.3 percent versus the base portfolio benchmark of 7.2 percent. This difference represents millions of dollars in value added by trustees and staff. The other defined benefit pension plans' returns for the fiscal year ending June 30, 2018, were essentially identical to PERS. Since asset allocations are virtually the same for each plan, any differences in the returns for the various pension plans are a function of the differences in the timing of cash flows into and out of each plan and relative levels of cash equivalent securities necessary to make benefit payments. Other trust assets, including the Wildlife Endowment Fund and the West Virginia Retiree Health Benefit Trust Fund, have similar asset allocations to the defined benefit pension plans and both returned 9.7 and 9.6 percent, respectively.

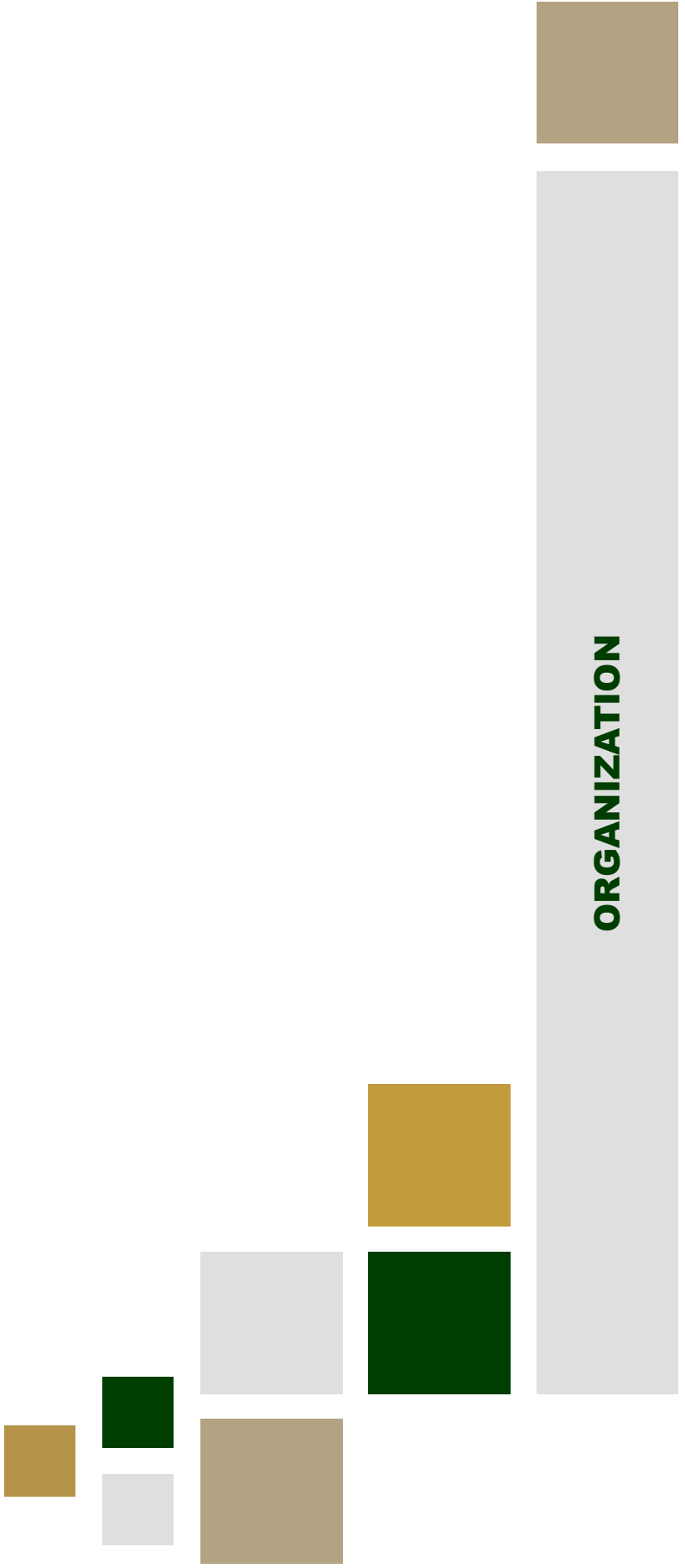
With regard to employment security assets, the reader will note a significant difference in returns from defined benefit plans. This is, primarily, a function of differences in the time horizon and liquidity needs, which vary quite significantly by plan. This leads to a wide divergence in the respective plans' allocations to various asset classes. As a result, the returns for employment security assets for the fiscal year ending June 30, 2018, range from 5.1 percent for the Workers' Compensation Uninsured Employer Fund to 4.8 percent for the Workers' Compensation Old Fund. Specific data on the returns and objectives of each Participant Plan may be found in the pages that follow.

As an investor, the IMB's capacity to generate a return on assets is largely a function of growth in the world capital markets. Diversification helps reduce short-term volatility in the capital markets, what is commonly referred to as risk, but it is generally at the expense of long-term growth. Growth is the engine of returns. The IMB's asset allocation is clearly tilted towards long-term growth for those assets with long time horizons, such as defined benefit pension plans. These plans are structured to spread risk and cost over multiple generations. The correct target rate of return is one that fairly does this. While the IMB does not set that rate, it has an obligation to advise those that do. The IMB believes that the current target is attainable over long time periods. That being said, the state of the capital markets will make it very difficult to achieve that rate in the near term. With sustained growth globally, it appears that the world has successfully weaned itself off easy monetary policy. But as one looks out over the horizon, there are many concerns. The current economic expansion has been one of the longest on record. China has become the major rival to the U.S. creating geopolitical tensions with far-reaching ramifications. Meanwhile, the disparity between the haves and have-nots in society has spawned a global wave of populism threatening the underpinnings of an economic order that has, despite its faults, raised unprecedented numbers out of poverty across the globe. Nevertheless, the future is unknowable. The IMB's portfolio is built for the long-term, seeking return from risky assets, while diversifying to reduce risk. The IMB will continue to monitor its portfolio, moderate the structure on the margins to accommodate what we believe the markets are offering, but not so much as to compromise the portfolio's ability to take advantage of long-term growth. The staff looks forward to helping trustees meet the challenges as fiscal 2019 unfolds.

Sincerely,



Craig Slaughter, JD, CFA
Executive Director



Board of Trustees – Fiscal Year 2018

Jim Justice, Chairman

Governor of the State of West Virginia

Steve Antoline

Businessman

G. Kurt Dettinger

Member in Steptoe & Johnson, PLLC

Judy Hale

David A. Haney

Executive Director of the West Virginia Education Association

Roger D. Hunter

Special Counsel, Bowles Rice, LLP

John B. McCuskey

Auditor of the State of West Virginia

David H. McKinley

President and Managing Director of McKinley | Carter Wealth Services

John D. Perdue

Treasurer of the State of West Virginia

Marie L. Prezioso

Executive Director, West Virginia Water Development Authority

Jack Rossi

Executive Vice President of Business Development, Summit Community Bank

Steven L. Smith

Administrator of the West Virginia Laborers Trust Funds

Randall E. Snider

President and Chief Executive Officer of Community Bank

Representatives and Committee Members – Fiscal Year 2018

Deputy Sheriff's Retirement System

David Gentry, Representative

J. Scott Gittings, Committee Member

Judges' Retirement System

John A. Hutchison, Representative

Public Employees' Retirement System

Melissa G Smith, Representative

Jonathan A. Adler, Committee Member

Jennifer Piercy, Committee Member

State Police Death, Disability and Retirement Fund

William J. Scott, Representative

State Police Retirement System

Reginald Patterson, Representative

Teachers' Retirement System

Tony Lautar, Jr., Representative

Robert L. Brown, Committee Member

Dale Lee, Committee Member

Emergency Medical Services Retirement System

Mark Kerns, Representative

Robert A. Ford, Committee Member

Workers' Compensation Old Fund and Coal Workers' Pneumoconiosis Fund

Melinda Kiss, Representative

Cheri Harpold, Committee Member

Nancy J. Staats, Committee Member

By statute, the Consolidated Public Retirement Board and the West Virginia Offices of the Insurance Commissioner are responsible for appointing a representative for each plan who may select a committee of up to three individuals. The Representative and Committee Members work with the Investment Management Board to develop the investment policy for their respective plan. They are appointed on an annual basis.

Staff Members – Fiscal Year 2018

Executive Staff

Craig Slaughter, J.D., CFA, Executive Director / Chief Investment Officer

Matthew Jones, CPA, CCM, CGMA, Chief Financial Officer / Chief Operating Officer

Deborah Sink, J.D., General Counsel / Policy Compliance Officer

Internal Audit

Melissa Petit, CPA, CIA, CIDA, CISA, MBA, Director of Internal Audit

Johnna Smith, Internal Audit Associate

Investments Division

Rod Livingston, CFA, CAIA, CCM, MBA, Senior Investment Officer

Tom Sauvageot, CAIA, MBA, Fixed Income and Real Estate Investment Officer

Jim Herrington, CFA, CAIA, MBA/MSM, Private and Public Equity Investment Officer

Operations Division

Roger Summerfield, CPA, Director of Operations

Steve Frenchik, CPA, CGMA, MBA, Financial Reporting Manager

Brian DuBois, Senior Investment Accountant

Linda Davis, Trade Analyst

Crystal Hunt, Investment Accountant

David McCormick, Investment Accountant

Anna Scott, CPA, CGMA, MS, Investment Accountant

Aaron Souza, CPA, Investment Accountant

James Atkins, CPA, CAIA, CGMA, Senior Alternative Investment Analyst

Mallory Engel, CPA, Alternative Investment Analyst

Mika Pierson, CPA, Alternative Investment Analyst

Support Staff

Jo Ann Harrison, CAP, Administrative Assistant to the Executive Director

Jane Heitz, Secretary / Receptionist

Shane Jividen, CPA, MA, Human Resources and Office Administrator

Milly Torman, Administrative Assistant

Technology Division

Darius Walker, MSCE, Director of Technology

Fred Branham, MSCE, MCSA, Senior Network Engineer

Rick Greathouse, CompTIA A+, Network+, Network Administrator

Rebecca King, CPA-Inactive, Enterprise Information Architect

Organizational History

The West Virginia Investment Management Board came into existence in the spring of 1997 after years of hard work modernizing the State's investment management structure. This structural modernization was widely acknowledged as a necessary precursor to the passage of a constitutional referendum to allow investment in stocks. The risks were perceived to be too great to be managed by anything but a modern, professional entity.

Although the West Virginia Investment Management Board's predecessors, the West Virginia State Board of Investments and the West Virginia Trust Fund, Inc., brought about vast improvements, each had significant shortcomings. However, with the creation of the West Virginia Investment Management Board, the State achieved a balance between control and independence that helps foster efficient and prudent investment management of long-term assets well into the future.

The beginning of the modern era in investment management by the State goes back to the late 1970s with the consolidation of the investment authority for the State's defined benefit plans, employment security plans, and other assets into a newly created West Virginia State Board of Investments. One of the goals of the legislation was to achieve economies of scale by commingling like assets.

Significantly, this newly created West Virginia Board of Investments was staffed by the State Treasury and the board itself was made up of the State's Governor, Treasurer, and Auditor.

Although a step in the right direction, the initial West Virginia State Board of Investments lacked proper or sufficient control features. After a few problems in the 1980s, principally involving its short-term pool, the Consolidated Fund, the board was expanded to seven members, adding four members from the private sector including an attorney experienced in financial matters and a Certified Public Accountant.

In the fall of 1990, the Legislature took a huge leap forward by creating a staff for the West Virginia State Board of Investments separate from the staff of the Treasury. This provided clear accountability to the Board of Investments – something that did not exist previously. Other very important control features included: (1) a statutory requirement for an Internal Auditor, (2) an annual external audit by a certified public accounting firm, and (3) monthly reporting requirements to government leaders in accordance with generally accepted accounting principles. This last feature dictated that all pools with a weighted average maturity in excess of 90 days must be marked-to-market (carried at market value), something that had not been done in the 1980s.

At the same time, the West Virginia Board of Investments made its first tepid step towards a diversified portfolio to be invested in stocks domiciled in the United States. Although it made some initial stock purchases in 1993, which were subsequently liquidated at a gain, the statute was challenged and the West Virginia Supreme Court ruled that investing in equities was unconstitutional.

In 1996, in an effort to satisfy the constitutional strictures, the Legislature carved out the pension and employment security funds with long time horizons and placed them in a trust to be managed by a new entity called the West Virginia Trust Fund, Inc. The creation of the trust as a vehicle to allow investment in stocks was also challenged and was struck down, failing to satisfy the constitutional concerns of the Supreme Court. It did, however, bring about three very important changes. The Legislature, demonstrating impeccable managerial foresight, granted the West Virginia Trust Fund, Inc. control over its own budget. With the same foresight, the Legislature imposed personal fiduciary liability on the board and staff of the West Virginia Trust Fund, Inc. Of no less importance was the creation of representative roles for members of the retirement systems and employment security systems.

With the failure of the West Virginia Trust Fund, Inc., it and the West Virginia State Board of Investments were replaced in 1997 by a new entity, the present day West Virginia Investment Management Board. The basic modernization process was complete. All of the improvements made in the Board of Investments and the West Virginia Trust Fund, Inc. were incorporated into the new entity.

The Legislature, for policy reasons, transferred the Consolidated Fund on July 8, 2005 to a newly created West Virginia Board of Treasury Investments, chaired by the State Treasurer. This was widely perceived as a policy move to ensure direct governmental oversight of State general and special revenue funds. The West Virginia Investment Management Board continues to manage the retirement funds, the employment security funds, and other assets with long time horizons.

In 2007, the Legislature expanded the investable universe of assets, increasing the allowable allocation to public equity and international securities, while also providing for a significant allocation to "alternative investments," loosely defined as hedge funds and private equity. Then, in 2014, the Legislature eliminated the percentage limitations on allowable asset classes or securities, joining most of its peers in recognizing the prudent investor standard of care is the most effective control on investor behavior for institutions.

Statutory Mandate

The bill creating the West Virginia Investment Management Board passed during the 1997 legislative session and is cited as the *West Virginia Investment Management Board Act* (the Act). The legislative findings of the Act make it clear that the West Virginia Investment Management Board was intended to be a professional, apolitical, financial management organization dedicated to the interests of the State's teachers, public employees and workers in general. The Act was intended to give the West Virginia Investment Management Board "...the authority to develop, implement and maintain an efficient and modern system for the investment and management of the State's money." In order to accomplish this purpose, the Act further stated that the West Virginia Investment Management Board must "...operate as an independent board with its own full-time staff of financial professionals immune to changing political climates..." [*West Virginia Code §12-6-1(a)(b)*] The Act also mandates that the assets contributed by the public employee and employer to the 401(a) Plans and the assets of the Workers' Compensation Fund and the Coal Workers' Pneumoconiosis Fund, are "declared to be irrevocable trusts, available for no use or purpose other than for the benefit of those public employees...workers, miners and their beneficiaries..." [*West Virginia Code §12-6-1(c)(d)*] The West Virginia Investment Management Board is further "empowered by this Article to act as Trustee of the irrevocable trusts created by this Article, and to manage and invest other state funds." [*West Virginia Code §12-6-1a(f)*]

The standard of care mandated by the Statute is that codified in the "Uniform Prudent Investor Act," Article 6C of Chapter 44 of the *West Virginia Code*. The West Virginia Investment Management Board is further subject to the following requirements:

- (a) Trustees shall discharge their duties with respect to the 401(a) Plans for the exclusive purpose of providing benefits to participants and their beneficiaries;
- (b) Trustees shall diversify fund investments so as to minimize the risk of large losses unless, under the circumstances, it is clearly prudent not to do so;
- (c) Trustees shall defray reasonable expenses of investing and operating the funds under management;
- (d) Trustees shall discharge their duties in accordance with the trust documents and instruments governing the trusts or other funds under the management insofar as the documents and instruments are consistent with provisions of this Article; and
- (e) The duties of the Board apply only with respect to those assets deposited with or otherwise held by it. [*West Virginia Code §12-6-11*]

Administrative Mandate

Governance of the West Virginia Investment Management Board is vested, by statute, in a thirteen-member Board of Trustees. Three members of the Board serve by virtue of their office: the Governor, the Auditor, and the Treasurer. The other ten are appointed by the Governor and confirmed by the Senate. All appointees must have experience in pension management, institutional management or financial markets. In addition, one must be an attorney experienced in finance and investment matters and another must be a Certified Public Accountant. Only six of the ten appointed Trustees may be from the same political party. The Governor serves as Chairman of the Board. A Vice-Chairman is elected by the Trustees. A Secretary, who need not be a member of the Board, is also elected by the Trustees to keep a record of the proceedings of the Board.

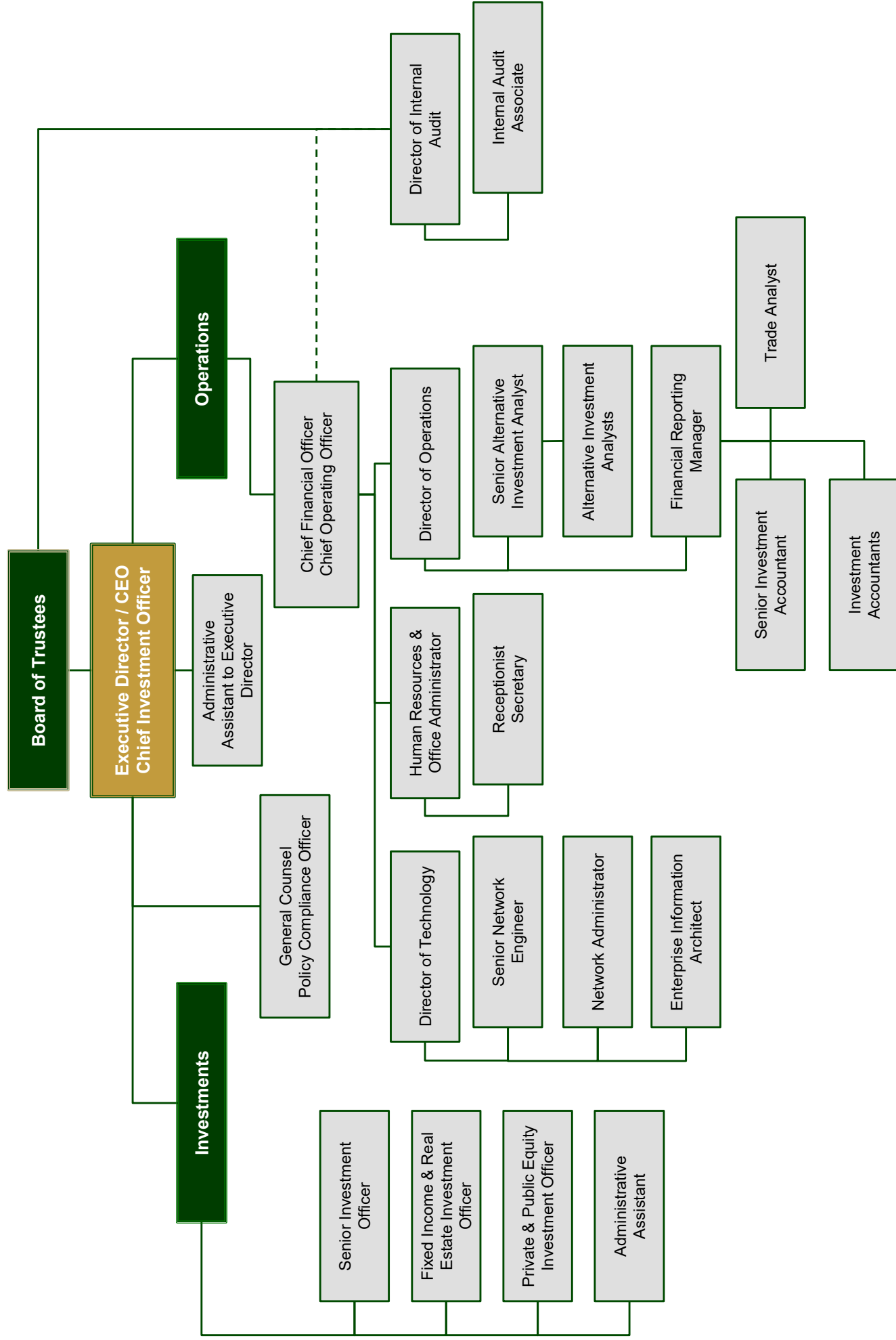
A member of each defined benefit retirement plan is designated by the Consolidated Public Retirement Board to represent the Participant Plans' interests. Likewise, the West Virginia Insurance Commission designates a representative for the Coal Workers' Pneumoconiosis Fund and the Workers' Compensation Old Fund. Each of the Representatives may designate up to three persons to comprise a committee representing their respective plan's beneficiaries. The Representatives and Committee Members do not have a vote but have the right to be heard at the annual meetings of the Board and are subject to the same code of conduct and requirements of confidentiality that apply to the Trustees.

The day-to-day management of the West Virginia Investment Management Board is delegated to the Executive Director who is appointed by the Board and serves at its will and pleasure. The Executive Director acts as an advisor to the Board on all matters.

The staff of the West Virginia Investment Management Board is divided into two principal divisions—Investments and Operations.

The Operations Division is focused on providing the back office support necessary for the organization to function on a day-to-day basis. The Investments Division is structured to devote its time and resources to staying current with new developments and research in the investment field and being prepared to apply this knowledge to the investment of assets for the West Virginia Investment Management Board. See the organization chart on the following page.

Organization Chart



Investment Philosophy

The primary objective of the investment pools is to provide benefits to its participants and beneficiaries. Based on general beliefs about the investment return available from a well-diversified, prudently invested portfolio, the Board has adopted specific investment objectives for each Participant Plan.

In order to achieve the investment objectives for each Participant Plan, the IMB relies on prevailing financial theory. This is a philosophy that is generally characterized by prudent diversification across different asset classes (stocks, bonds, cash, non-traditional, etc.) to reduce risk, taking into account each Participant Plan's time horizon, liquidity needs, financial condition (funded status), and return objectives in determining each Participant Plan's appropriate allocation to various assets. Diversification is not just limited to asset classes although it is, generally, considered the most significant factor. Other factors, including, but not limited to, geography/country, industry, and maturity, are also considered from the Participant Plan's perspective. These factors may also dictate the extent to which the Participant Plan may be impacted by general business conditions. Importantly, the factors mentioned here are not intended to be limiting; rather, they are outlined as a general indication of the importance of diversification and customization to proper asset allocation. The Board determines the proper allocation among asset classes and managers, based on advice and analysis provided by the IMB and an external general investment consultant.

The Board recognizes that even though its investments may be subject to short-term volatility, it is critical that the IMB maintain a focus on longer time horizons for most Participant Plans, during which time the impact of short-term market volatility generally averages out. Impulsive reactions to short-term market events are not conducive to achieving long-term investment objectives. The strategies employed for each Participant Plan factor in an acceptable level of expected volatility given the relevant time horizon and liquidity needs for that Participant Plan. This prevents ad-hoc revisions to its philosophy and policies in reaction to either speculation or short-term market fluctuations. It is important to note that the Board recognizes that markets may become dislocated due to behavioral or other factors. When major dislocations occur, the Board has allowed for minor adjustments to the asset allocation for each Participant Plan through its Allocation Committee. In order to preserve a longer-term perspective generally, however, the Board of Trustees has adopted the following formal review schedule:

Agenda Item	Review Schedule
Investment Performance	Quarterly
Investment Policy	Every Year
Allocation Ranges	Every Three Years
Asset Allocation Review for Each Participant Plan	At Least Every Three Years

The Board may hire investment managers to implement its objectives. These managers will be given specific tactical roles within the overall strategic investment plan. Depending on their assignments, the managers may be judged on some or all of the following: (1) consistency of philosophy, style and key personnel, (2) performance relative to an appropriate index or proxy group, and (3) ability to add incremental value after costs. The Board and staff shall monitor performance and supervise all fund managers.

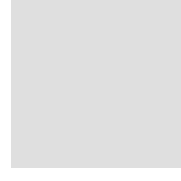
In determining the appropriate level of risk, the Board considers, in addition to its fiduciary obligations and statutory requirements, each entity's purpose and characteristics, financial condition, liquidity needs, sources and level of contributions, income and general business conditions. Based upon these many factors, the Board identifies where either a more aggressive or more conservative investment approach is warranted, on an individual plan-by-plan basis.

INVESTMENT OBJECTIVES

"Trustees, at the annual meeting...shall review, establish and modify, if necessary, the investment objectives of the individual participant plans, as incorporated in the investment policy statements of the respective trusts so as to provide for the financial security of the trust funds giving consideration to the following: (1) Preservation of Capital; (2) Diversification; (3) Risk Tolerance; (4) Rate of Return; (5) Stability; (6) Turnover; (7) Liquidity; and (8) Reasonable Costs of Fees." [West Virginia Code §12-6-11(a)(5)]

PARTICIPANT PLANS

The Board's objective is to manage the Participant Plans' moneys in an efficient and economical manner, managing risk as it seeks to achieve the specific goals set out in each Participant Plan's investment program.



INVESTMENT OBJECTIVES & FINANCIAL HIGHLIGHTS



Equity Pool

OBJECTIVES

The main objective for the Equity Pool is to provide for long-term growth for all participants. The Equity Pool is comprised of separate strategic asset classes which, when taken in aggregate, enable adequate diversification. Separate investment pools have been established for each investment style or to comply with specific legal and accounting requirements. The strategic asset classes, the Neutral Target allocations to additional sub-components of the strategic asset classes, as well as the approved Allocation Ranges within which the Allocation Committee can operate, are outlined below:

Category	Strategic Allocation	Allocation Range
U.S. Equity	25.0%	+/- 5% (20% to 30%)
International Equity	25.0%	+/- 5% (20% to 30%)
Equity Pool	50.0%	+/- 5% (45% to 55%)

Note: Each Participant Plan has its own unique Strategic Allocation. The above example is for clarification purposes only.

Category	Neutral Target*	Allocation Range
U.S. Large Cap vs. U.S. Non-Large Cap	Large = 1 minus Non-Large Non-Large = Russell 2500/Russell 3000	0.5 to 2.5 times benchmark Sum must equal 100
U.S. Non-Large Value vs. U.S. Non-Large Growth	Value vs. Growth Percentage in Russell 2500	0.5 to 2.5 times benchmark Sum must equal 100
International Large vs. International Small vs. Emerging Markets	Large vs. Small vs. Emerging Percentage in MSCI ACWI ex U.S. (IMI)	0.5 to 2.5 times benchmark Sum must equal 100

** The Neutral Target is established based on the listed indices and is reset, subject to Allocation Committee decisions, based on these index weights every June 30.*

MANAGEMENT STRUCTURE

The equity pools are managed by the following firms, in accordance with a particular investment style.

Manager	Style
Domestic Equity Pool	
BlackRock	Index Core
INTECH Investment Management, LLC	Quantitative Core
Westfield Capital Management	Growth at a Reasonable Price
AJO	Relative Value
International Qualified and International Nonqualified Pools	
<i>Developed Markets</i>	
Silchester International Investors	All Country, Value
International Equity Pool	
<i>Developed Markets</i>	
LSV Asset Management	All Country, Relative Value
<i>Small Capitalization</i>	
Oberweis Asset Management, Inc.	All Country, Growth
Acadian Asset Management, LLC	All Country, Quantitative Value
<i>Emerging Markets</i>	
Brandes Investment Partners, L.P.	Emerging Market, Value
Axiom International Investors, LLC	Emerging Market, Growth at a Reasonable Price

Equity Pool

FINANCIAL HIGHLIGHTS (in \$000s)

Audited financial statements are prepared for each of the equity pools and are available at www.WVIMB.org. Financial Highlights for each pool are presented below.

Composite	Individual Pools per Audited Financial Statements
Domestic	Domestic Equity Pool
International	International Qualified Pool International Nonqualified Pool International Equity Pool

Condensed Statement of Net Position

	Domestic Equity	International Qualified	International Nonqualified	International Equity
Investments	\$ 4,688,808	\$ 1,330,940	\$ 215,417	\$ 3,042,760
Payable upon return of securities loaned	(175,460)	-	-	(75,874)
Cash	-	-	-	39,429
Receivable for investments sold	59,473	-	-	192,601
Payable for investments purchased	(10,088)	-	-	(223,211)
Other assets and liabilities	1,860	(56)	(9)	11,123
Net position - June 30, 2018	\$ 4,564,593	\$ 1,330,884	\$ 215,408	\$ 2,986,828

Investments

Domestic Equity

	Fair Value	Percent of Securities
Domestic equities sector exposure:		
Basic Materials	\$ 103,926	2.2%
Capital Goods	363,371	7.7
Communications Services	7,997	0.2
Consumer Discretionary	346,132	7.4
Consumer Staples	96,641	2.1
Energy	113,247	2.4
Financial Services	649,261	13.8
Health Care	285,898	6.1
Technology	464,049	9.9
Utilities	102,894	2.2
Total domestic equities	2,533,416	54.0
Commingled equity fund	1,924,392	41.1
Money market mutual funds	55,540	1.2
Securities lending collateral	175,460	3.7
Total	\$ 4,688,808	100.0%

Investments

International Qualified

International Nonqualified

	Fair Value	Percent of Securities	Fair Value	Percent of Securities
Commingled equity funds	\$ 1,330,940	100.0%	\$ 215,417	100.0%

Equity Pool

FINANCIAL HIGHLIGHTS (continued in \$000s)

Investments	International Equity	
	Fair Value	Percent of Securities
International equities country exposure:		
Australia	\$ 88,553	2.9%
Brazil	133,804	4.4
Canada	110,991	3.6
Cayman Islands	186,354	6.1
China	143,466	4.7
France	139,861	4.6
Germany	101,982	3.4
Hong Kong	77,228	2.5
India	79,014	2.6
Japan	402,315	13.2
Korea	209,445	6.9
Mexico	68,665	2.3
Netherlands	61,466	2.0
Russia	98,765	3.2
Switzerland	86,768	2.9
Taiwan	113,129	3.7
United Kingdom	257,416	8.5
All others (none greater than 2%)	581,106	19.1
Total international equities	2,940,328	96.6
Money market mutual fund	26,558	0.9
Securities lending collateral	75,874	2.5
Total	\$ 3,042,760	100.0%

Progression of Net Position	Domestic Equity	International Qualified	International Nonqualified	International Equity
Net position - June 30, 2017	\$ -	\$ 1,453,401	\$ 201,799	\$ 3,149,493
Net investment income	628,805	102,040	13,542	216,318
In-kind transfers	4,266,819	-	-	-
Net increase (decrease) from purchases and sales of units	(331,031)	(224,557)	67	(378,983)
Net position - June 30, 2018	\$ 4,564,593	\$ 1,330,884	\$ 215,408	\$ 2,986,828

Equity Pool

INVESTMENT PERFORMANCE

The IMB calculates total rates of return using the time-weighted rate of return methodology. The time-weighted method determines the rate of return exclusive of the effects of participant contributions or withdrawals. Actual rates of return are net of investment advisor fees.

Period	Domestic Equity		International Qualified		International Nonqualified		International Equity	
	Actual	Russell 3000	Actual	MSCI EAFE	Actual	MSCI EAFE	Actual	MSCI ACWI ex U.S.(IMI)*
One-year	15.0%	14.8%	6.9%	7.4%	6.8%	7.4%	6.7%	8.2%
Three-year	11.3%	11.6%	7.1%	5.4%	6.9%	5.4%	7.1%	6.0%
Five-year	13.3%	13.3%	9.2%	6.9%	9.0%	6.9%	7.3%	6.8%
Ten-year	10.2%	10.2%	8.6%	3.3%	8.3%	3.3%	4.3%	3.2%
Twenty-year	7.6%	6.8%	N/A	N/A	N/A	N/A	N/A	N/A

*Prior to January 2014, the International Equity Pool index was the MSCI ACWI ex U.S. (Standard).

EXPENSES

The IMB charges each investment pool for its direct investment-related expenses, such as investment advisor fees, custodian bank fees, and some professional service fees, and an allocated share of other expenses. The Equity Pool's expenses for the year, divided by the average net position, are as follows:

Expense Ratios (in basis points)	Domestic Equity	International Qualified	International Nonqualified	International Equity
Investment advisor fees	4.5	51.2	58.4	58.7
Trustee fees	0.0*	0.0*	0.0*	0.0*
Custodian bank fees	0.3	N/A	N/A	5.2
Management fees	2.5	2.5	2.5	2.5
Fiduciary bond fees	0.0*	0.0*	0.0*	0.0*
Professional service fees	0.5	0.5	0.5	0.5
Total	7.8	54.2	61.4	66.9

* Expense Ratio rounds to less than 0.1 basis points.

Trading Costs	Domestic Equity	International Equity	Total
Net commission costs (in \$000s)	\$ 1,627	\$ 2,765	\$ 4,392
Domestic equity commission rate (cents per share)	1.7		
International equity commission rate (basis points per dollar volume)	9.8		

Short-Term Fixed Income Pool

OBJECTIVES

The Short-Term Fixed Income Pool was created to maintain sufficient liquidity to meet the daily disbursements requested by the Plans and to invest any contributions until the time the money is transferred to other asset classes without sustaining capital losses and while earning a small return above inflation. The Short-Term Fixed Income Pool is structured as a commingled fund where the goal is a stable dollar value per share, thus preserving principal. The risk factor on this pool is low and managed through numerous maturity restrictions, diversification guidelines, and credit limits. The participants are paid on an income basis that includes interest income net of expenses.

MANAGEMENT STRUCTURE

The Short-Term Fixed Income Pool is managed by JPMorgan Investment Advisors, Inc.

FINANCIAL HIGHLIGHTS (in \$000s)

Audited financial statements for the Short-Term Fixed Income Pool are available at www.WVIMB.org. Financial Highlights are presented below.

Condensed Statement of Net Position

Investments	\$	218,291
Cash		1
Other assets and liabilities, net		(23)
Net position - June 30, 2018	\$	<u>218,269</u>

Investments

	Fair Value	Percent of Securities
Commercial paper	\$ 22,171	10.2%
Repurchase agreement	40,000	18.3
U.S. government agency bonds	106,794	48.9
U.S. Treasury bonds	49,326	22.6
Total	\$ 218,291	100.0%

Progression of Net Position

Net position - June 30, 2017	\$	218,035
Net investment income		2,106
Distributions to unitholders		(2,109)
Net increase from unit transactions		237
Net position - June 30, 2018	\$	<u>218,269</u>

Short-Term Fixed Income Pool

INVESTMENT PERFORMANCE

The IMB calculates total rates of return using the time-weighted rate of return methodology. The time-weighted method determines the rate of return exclusive of the effects of participant contributions or withdrawals. Actual rates of return are net of investment advisor fees.

Period	Actual	Citigroup 90 Day Treasury Bill*
One-year	1.3%	1.3%
Three-year	0.7%	0.6%
Five-year	0.5%	0.4%
Ten-year	0.4%	0.4%
Twenty-year	2.1%	2.0%

**Prior to January 2014, the Short-Term Fixed Income Pool index was the Citigroup 90 Day Treasury Bill plus 15 basis points.*

EXPENSES

The IMB charges each investment pool for its direct investment-related expenses, such as investment advisor fees, custodian bank fees, and some professional service fees, and an allocated share of other expenses. The Short-Term Fixed Income Pool's expenses for the year, divided by the average net position, are as follows:

Expense Ratios (in basis points)

Investment advisor fees	5.0
Trustee fees	0.0*
Custodian bank fees	0.8
Management fees	2.7
Fiduciary bond fees	0.0*
Professional service fees	0.5
Total	<u>9.0</u>

* Expense Ratio rounds to less than 0.1 basis points.

Fixed Income Pool

OBJECTIVES

The main objectives for the Fixed Income Pool are to generate investment income, provide stability, and enhance diversification, but not at the expense of total return. Separate investment pools have been established for particular investment styles or to comply with specific accounting requirements. The strategic asset class, the Neutral Target allocation to the sub-component of the strategic asset class, as well as the approved Allocation Ranges within which the Allocation Committee can operate, are outlined below:

Category	Strategic Allocation	Allocation Range
Core Fixed Income	--	--
Total Return Fixed Income	--	--
Fixed Income Pool	20.0%	+/- 5% (15% to 25%)

Note: Each Participant Plan has its own unique Strategic Allocation. The above example is for clarification purposes only.

Neutral Target	Allocation Range
50% Total Return Fixed Income	+/- 20% (30% to 70%)
50% Core Fixed Income	+/- 20% (30% to 70%)

MANAGEMENT STRUCTURE

The fixed income pools are managed by the following firms, in accordance with a particular investment style.

Manager	Style
Total Return Fixed Income Pool	
Western Asset Management Company	Core Plus Fixed Income
Dodge & Cox	Core Plus Fixed Income
Franklin Templeton Investments	Emerging Markets Fixed Income
Core Fixed Income Pool	
JPMorgan Investment Advisors, Inc.	Core Fixed Income

FINANCIAL HIGHLIGHTS (in \$000s)

Audited financial statements are prepared for each of the fixed income pools and are available at www.WVIMB.org. Financial Highlights for each pool are presented below.

Condensed Statement of Net Position	Total Return Fixed Income	Core Fixed Income
Investments	\$ 2,471,293	\$ 1,121,591
Investment derivatives and security sold short	(1,318)	-
Payable upon return of securities loaned	(152,808)	(76,844)
Cash	43,963	-
Receivable for investments sold	1,814	190
Payable for investments purchased	(14,337)	(7,962)
Other assets and liabilities	16,867	5,035
Net position – June 30, 2018	\$ 2,365,474	\$ 1,042,010

Fixed Income Pool

FINANCIAL HIGHLIGHTS (continued in \$000s)

Investments	Total Return Fixed Income		Core Fixed Income	
	Fair Value	Percentage of Securities	Fair Value	Percentage of Securities
Commingled debt funds	\$ 304,379	12.3%	\$ -	0.0%
Corporate asset backed issues	41,559	1.7	137,199	12.2
Corporate CMO	71,666	2.9	39,668	3.5
Corporate preferred security	10,886	0.4	-	0.0
Foreign asset backed issues	19,588	0.8	3,499	0.3
Foreign corporate bonds	296,352	12.0	64,249	5.7
Foreign currency forward contracts	3,415	0.1	-	0.0
Foreign equity investments	14	0.0	-	0.0
Foreign government bonds	263,976	10.7	5,887	0.5
Futures contracts	(4,042)	(0.2)	-	0.0
Money market mutual fund	33,322	1.3	17,736	1.6
Municipal bonds	44,629	1.8	9,007	0.8
Option contracts purchased	7,993	0.3	-	0.0
Option contracts written	(2,381)	(0.1)	-	0.0
Repurchase agreement	10,000	0.4	-	0.0
Securities lending collateral	152,808	6.2	76,844	6.9
Swaps	(5,814)	(0.2)	-	0.0
U.S. corporate bonds	401,582	16.3	205,614	18.4
U.S. government agency bonds	2,721	0.1	18,746	1.7
U.S. government agency CMO	57,272	2.3	112,792	10.1
U.S. government agency MBS	334,567	13.6	176,391	15.7
U.S. Treasury issues	425,483	17.3	253,959	22.6
Total	\$ 2,469,975	100.0%	\$ 1,121,591	100.0%

Progression of Net Position

	Total Return Fixed Income	Core Fixed Income
Net position - June 30, 2017	\$ 2,322,334	\$ 996,072
Net investment income (loss)	19,633	(2,475)
Distributions to unitholders	(65,332)	(26,565)
Net increase from unit transactions	88,839	74,978
Net position - June 30, 2018	\$ 2,365,474	\$ 1,042,010

INVESTMENT PERFORMANCE

The IMB calculates total rates of return using the time-weighted rate of return methodology. The time-weighted method determines the rate of return exclusive of the effects of participant contributions or withdrawals. Actual rates of return are net of investment advisor fees.

Period	Total Return Fixed Income		Core Fixed Income	
	Actual	Bloomberg Barclays U.S. Universal Bond*	Actual	Bloomberg Barclays U.S. Aggregate Bond
One-year	0.9%	(0.3)%	(0.1)%	(0.4)%
Three-year	3.4%	2.1%	2.0%	1.7%
Five-year	3.4%	2.6%	2.6%	2.3%
Ten-year	4.9%	4.1%	N/A	N/A
Twenty-year	5.8%	4.9%	N/A	N/A

* Prior to April 2008, the Total Return Fixed Income Pool index was a custom index.

Fixed Income Pool

EXPENSES

The IMB charges each investment pool for its direct investment-related expenses, such as investment advisor fees, custodian bank fees, and some professional service fees, and an allocated share of other expenses. The Fixed Income Pools' expenses for the operating period, divided by the average net position, are as follows:

Expense Ratios (in basis points)	Total Return Fixed Income	Core Fixed Income
Investment advisor fees	21.9	12.3
Trustee fees	0.0*	0.0*
Custodian bank fees	0.8	0.6
Management fees	2.5	2.5
Fiduciary bond fees	0.0*	0.0*
Professional service fees	0.5	0.5
Total	<u>25.7</u>	<u>15.9</u>

* Expense Ratio rounds to less than 0.1 basis points.

This page intentionally left blank

TIPS Pool

OBJECTIVES

The objectives for the TIPS Pool are to enhance diversification, mitigate the risk of inflation, generate investment income, and to provide a relatively stable investment.

MANAGEMENT STRUCTURE

The TIPS Pool is managed by BlackRock.

FINANCIAL HIGHLIGHTS (in \$000s)

Audited financial statements for the TIPS Pool are available at www.WVIMB.org. Financial Highlights are presented below.

Condensed Statement of Net Position

Investments	\$ 391,265
Other assets and liabilities	(31)
Net position - June 30, 2018	<u>\$ 391,234</u>

Investments

	Fair Value	Percent of Securities
Commingled bond fund	<u>\$ 391,265</u>	<u>100.0%</u>

Progression of Net Position

Net position - June 30, 2017	\$ 328,183
Net investment income	7,764
Net increase from unit transactions	55,287
Net position - June 30, 2018	<u>\$ 391,234</u>

INVESTMENT PERFORMANCE

The IMB calculates total rates of return using the time-weighted rate of return methodology. The time-weighted method determines the rate of return exclusive of the effects of participant contributions or withdrawals. Actual rates of return are net of investment advisor fees.

Period	Actual	Bloomberg Barclays U.S. TIPS
One-year	2.2%	2.1%
Three-year	1.9%	1.9%
Five-year	1.7%	1.7%

TIPS Pool

EXPENSES

The IMB charges each investment pool for its direct investment-related expenses, such as investment advisor fees, custodian bank fees, and some professional service fees, and an allocated share of other expenses. The TIPS Pool's expenses for the operating period, divided by the average net position, are as follows:

Expense Ratios (in basis points)

Investment advisor fees	2.4
Trustee fees	0.0*
Custodian bank fees	0.3
Management fees	2.5
Fiduciary bond fees	0.0*
Professional service fees	0.5
Total	<u>5.7</u>

* Expense Ratio rounds to less than 0.1 basis points.

This page intentionally left blank

Special Purpose Pool

The Board operates one special purpose pool: **TRS ANNUITY POOL**

HISTORY (in \$000s)

The Pool held an investment contract issued by the Variable Annuity Life Insurance Company (VALIC) strictly for the benefit of the Teachers' Retirement System (TRS). On December 10, 2008, the IMB assumed responsibility for this investment as part of the restructuring of the Teachers' Defined Contribution (TDC) plan, a separate retirement plan administered solely by the Consolidated Public Retirement System, whereby certain TDC participants elected to transfer the ownership of their individual TDC retirement accounts to the TRS in exchange for current participation in the TRS defined benefit plan. The final amount transferred under the contract was \$248,293.

The IMB initially requested the immediate redemption of the entire balance but VALIC denied the request, claiming the amounts were subject to withdrawal restrictions. Effective April 23, 2009, the IMB, while reserving its rights under the contract, executed the appropriate forms with VALIC to elect to withdraw funds under the Five Year Equal Annual Installment method. By making this election the guaranteed minimum annual yield of 4.5 percent became the fixed rate for this contract. The first four withdrawals of \$55,058 each occurred on May 4, 2009, 2010, 2011 and 2012. The final withdraw of \$55,191 occurred on May 8, 2013. On that date, all remaining income, net of all management fees, was distributed to TRS and all units of ownership in the Pool were redeemed.

In response to VALIC's refusal to allow the IMB to liquidate the contract in its entirety, the IMB sued VALIC. A three-judge Business Court arbitration panel issued its decision on April 28, 2017, and no recovery was awarded to the IMB. An appeal was filed with the West Virginia Supreme Court of Appeals and it has issued an opinion affirming the decision of the arbitration panel. The IMB and the CPRB have filed a Petition for Rehearing asking the Supreme Court to revisit its decision. There are ongoing legal fees associated with this litigation and these expenses are accrued to the Pool. The funding for the payment of these expenses results from contributions by the TRS into the TRS Annuity Pool. No other management fees are charged to the Pool and none have been charged since the final withdrawal on May 8, 2013. Once this matter is finalized the TRS Annuity Pool will be closed.

FINANCIAL HIGHLIGHTS (in \$000s)

Audited financial statements for the TRSA are available at www.WVIMB.org. Financial Highlights are presented below.

Condensed Statement of Net Position

Assets	\$	-
Accrued expenses		(130)
Net position - June 30, 2018	\$	<u>(130)</u>

Progression of Net Position

Net position - June 30, 2017	\$	(135)
Net investment loss		(521)
Net increase from capital transactions		526
Net position - June 30, 2018	\$	<u>(130)</u>

Private Markets Pool

OBJECTIVES

The objective of the Private Markets Pool is to enhance the diversification and stability of the portfolio, while generating a higher level of income than generally available in the public fixed income markets and to provide for long-term growth of participants' assets and risk-reduction through diversification. The Private Markets Pool is comprised of the private equity, real estate, and opportunistic income strategies. Prior to July 1, 2017, each of these strategies were operated as individual investment pools. For operational efficiencies, the three pools were combined on July 1, 2017 to form the Private Markets Pool. Investment performance for each of these strategies is tracked separately and presented on the following page.

The private equity strategy is comprised of the following categories and target range allocations as of June 30, 2018:

Category	Target Range
Corporate Finance	90-100%
Venture Capital	0-10%
U.S.	80-100%
Non-U.S.	0-20%

The real estate strategy is comprised of three categories. The target range allocations as of June 30, 2018, are as follows:

Category	Target	Target Range
Core	50%	+/- 20% (30% to 70%)
Value-Added	30%	+/- 20% (10% to 50%)
Opportunistic	20%	+/- 10% (10% to 30%)

The opportunistic income strategy is to invest in a broad spectrum of non-traditional income oriented assets.

MANAGEMENT STRUCTURE

The selection of investments in the Private Markets Pool are approved by the Board of Trustees or by its established committees.

FINANCIAL HIGHLIGHTS (in \$000s)

Audited financial statements for the Private Markets Pool are available at www.WVIMB.org. Financial Highlights are presented below.

Condensed Statement of Net Position

Investments	\$ 4,151,725
Payable upon return of securities loaned	(10,636)
Cash	3,086
Fund distributions receivable	7,920
Receivable for investments sold	2,348
Payable for investments purchased	(2,371)
Other assets and liabilities	(572)
Net position - June 30, 2018	<u>\$ 4,151,500</u>

Private Markets Pool

FINANCIAL HIGHLIGHTS (in \$000s) (continued)

Investments	Fair Value	Percent of Securities
Corporate bonds	\$ 7,602	0.2%
Equity investments	317,676	7.7
Money market mutual fund	202,780	4.9
Opportunistic income funds	428,343	10.3
Private equity partnerships	1,562,388	37.6
Private real estate partnerships and funds	1,622,300	39.0
Securities lending collateral	10,636	0.3
Total	\$ 4,151,725	100.0%

Progression of Net Position

Net position - June 30, 2017	\$ -
Net investment income	507,463
In-kind transfers	3,571,572
Net increase from purchases and sales of units	72,465
Net position - June 30, 2018	\$ 4,151,500

INVESTMENT PERFORMANCE BY STRATEGY

The IMB calculates total rates of return using the time-weighted rate of return methodology. The time-weighted method determines the rate of return exclusive of the effects of participant contributions or withdrawals. Actual rates of return are net of external investment management and/or partnership fees and expenses.

Period	Private Equity		Real Estate		Opportunistic Income	
	Actual	Russell 3000 plus 300 basis points*	Actual	NCREIF Property Index plus 100 basis points	Actual	Credit Suisse Leveraged Loan plus 200 basis points
One-year	21.3%	N/A	9.4%	N/A	5.0%	7.2%
Three-year	15.9%	N/A	9.5%	N/A	N/A	N/A
Five-year	16.4%	16.4%	10.0%	11.0%	N/A	N/A
Ten-year	11.2%	14.1%	6.4%	7.1%	N/A	N/A

*Prior to January 2014, the Private Equity index was the S&P 500 plus 500 basis points.

EXPENSES

The IMB charges each investment pool for its direct investment-related expenses, such as investment advisor fees, custodian bank fees, and some professional service fees, and an allocated share of other expenses. The Private Market Pool's expenses for the year, divided by the average net position, are as follows:

Expense Ratio (in basis points)

Investment advisor fees	2.7
Trustee fees	0.0*
Custodian bank fees	0.3
Management fees	2.5
Fiduciary bond fees	0.0*
External fees/Fund closing costs	16.1
Professional service fees	4.0
Total	25.6

* Expense Ratio rounds to less than 0.1 basis points.

Hedge Fund Pool

OBJECTIVES

The main objective for the Hedge Fund Pool is to reduce risk through diversification of participants' assets. Secondly, the Hedge Fund Pool should provide for long-term growth of its participants' assets.

The Hedge Funds are comprised of the following strategic categories and target range allocations as of June 30, 2018:

Category	Target Range	Allocation Range
Core		
Relative Value	30-40%	25-55%
Event Driven	15-25%	10-40%
Long-Short Equity	15-25%	10-40%
Directional	10-20%	5-25%
Supplemental		
Long Biased	5-15%	0-20%
Private Equity	0-3%	0-5%
Private Credit	0-3%	0-5%
Real Assets	0-3%	0-5%

MANAGEMENT STRUCTURE

The selection of investments in the Hedge Fund Pool are approved by the Hedge Fund Subcommittee.

FINANCIAL HIGHLIGHTS (in \$000s)

Audited financial statements for the Hedge Fund Pool are available at www.WVIMB.org. Financial Highlights are presented below.

Condensed Statement of Net Position

Investments	\$ 2,130,988
Advance on investments in hedge funds	88,500
Cash	2,787
Investment funds redeemed	17,788
Other assets and liabilities	95
Net position - June 30, 2018	\$ 2,240,158

Investments

	Fair Value	Percent of Securities
Hedge funds	\$ 2,078,624	97.5%
Money market mutual fund	52,364	2.5
Total	\$ 2,130,988	100.0%

Progression of Net Position

Net position - June 30, 2017	\$ 1,825,758
Net investment income	119,211
Net increase from unit transactions	295,189
Net position - June 30, 2018	\$ 2,240,158

Hedge Fund Pool

INVESTMENT PERFORMANCE

The IMB calculates total rates of return using the time-weighted rate of return methodology. The time-weighted method determines the rate of return exclusive of the effects of participant contributions or withdrawals. Actual rates of return are net of external investment management and/or partnership fees and expenses.

Period	Actual	HFRI FoF plus 100 basis points*
One-year	6.4%	6.2%
Three-year	2.4%	2.9%
Five-year	4.3%	3.7%
Ten-year	4.2%	4.2%

** Prior to January 2014, the Hedge Fund index was LIBOR plus 400 basis points.*

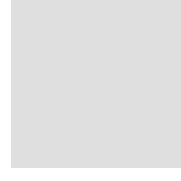
EXPENSES

The IMB charges each investment pool for its direct investment-related expenses, such as custodian bank fees and some professional service fees, and an allocated share of other expenses. The Hedge Fund Pool's expenses for the year, divided by the average net position, are as follows:

Expense Ratio (in basis points)

Trustee fees	0.0*
Custodian bank fees	0.0*
Management fees	2.5
Fiduciary bond fees	0.0*
Professional service fees	2.8
Total	<u>5.3</u>

* Expense Ratio rounds to less than 0.1 basis points.



PARTICIPANT PLANS

Participant Plans Overview

FINANCIAL HIGHLIGHTS (in \$000s)

Plan Balances as of June 30, 2018

	Assets	Percent of Total	Page Reference
Pension Assets			
Deputy Sheriff's Retirement System	\$ 219,368	1.1%	29
Emergency Medical Services Retirement System	78,921	0.4	31
Judges' Retirement System	204,484	1.0	33
Municipal Police Officers' and Firefighters' Retirement System	7,843	0.0	35
Municipal Policemen's or Firemen's Pension and Relief Funds	2,638	0.0	37
Public Employees' Retirement System	6,718,698	34.5	38
State Police Death, Disability and Retirement Fund	682,799	3.5	40
State Police Retirement System	188,912	1.0	42
Teachers' Retirement System	7,691,788	39.5	44
Insurance Assets			
Board of Risk and Insurance Management	151,588	0.8	46
Coal Workers' Pneumoconiosis Fund	245,797	1.3	48
Public Employees Insurance Agency	198,826	1.0	50
West Virginia Retiree Health Benefit Trust Fund	903,813	4.6	52
Workers' Compensation Old Fund	1,185,505	6.1	54
Workers' Compensation Self-Insured Employer Guaranty Risk Pool	33,908	0.2	56
Workers' Compensation Self-Insured Employer Security Risk Pool	53,204	0.3	58
Workers' Compensation Uninsured Employers' Fund	12,881	0.1	60
Endowment Assets			
Berkeley County Development Authority	7,742	0.0	62
Revenue Shortfall Reserve Fund	167,666	0.9	64
Revenue Shortfall Reserve Fund - Part B	438,711	2.2	66
West Virginia Department of Environmental Protection Agency	195,399	1.0	68
West Virginia Department of Environmental Protection Trust	9,658	0.0	70
West Virginia Prepaid Tuition Trust Fund	42,256	0.2	72
Wildlife Endowment Fund	63,823	0.3	74
Total	\$ 19,506,228	100.0%	

Deputy Sheriff's Retirement System

HISTORY

The Deputy Sheriff's Retirement System (DSRS) was created in 1998.

LIQUIDITY NEEDS

DSRS currently has positive net cash flows.

INVESTMENT OBJECTIVES

The investment objectives are as follows:

- Exceed the actuarial interest rate assumption of 7.5 percent per annum, net of fees.
- Preserve the current well-funded position while not subjecting DSRS to an undue level of risk.

ASSET ALLOCATION

Based upon a determination of the appropriate risk tolerance, the Board adopted the following broad asset allocation guidelines for the assets managed for DSRS. Base and Strategic Allocations are established on a market value basis.

Asset Class	Base Allocation	Strategic Allocation**
Domestic Equity	30.0%	27.5%
International Equity	30.0%	27.5%
Private Equity	0.0%	10.0%
Fixed Income	40.0%	15.0%
Opportunistic Income	0.0%	0.0%
Hedge Fund	0.0%	10.0%
Real Estate	0.0%	10.0%
Cash (included in Fixed Income above)	\$250,000*	

* IMB Staff has authority to change the cash allocation plus or minus 10 percent, as necessary, in consultation with the appropriate representative(s) from DSRS.

** The Allocation Committee has the authority to change the allocation within an established range around the Strategic Allocation for the public equity, fixed income, and opportunistic income asset classes. The range authority for public equities and fixed income is defined in the IMB's Investment Policy Statement for the Equity and Fixed Income Pools, respectively (Appendix C). The Base and Strategic Allocations to opportunistic income are 0%, but the Allocation Committee has the authority to make a range allocation of up to 5% to this asset class. Private Equity, Opportunistic Income, and Real Estate together comprise the Private Markets Pool.

Deputy Sheriff's Retirement System

FINANCIAL HIGHLIGHTS (in \$000s)

Progression of Plan Balance

June 30, 2017	\$ 199,466
Contributions	7,145
Withdrawals	(6,588)
Net	557
Investment income	889
Net appreciation	18,456
June 30, 2018	\$ 219,368

Asset Allocation

	Amount	Percent of Total
Domestic Equity	\$ 55,237	25.2%
International Qualified	18,732	8.5
International Equity	36,109	16.5
Short-Term Fixed Income	478	0.2
Total Return Fixed Income	21,079	9.6
Core Fixed Income	9,174	4.2
Private Markets	54,410	24.8
Hedge Fund	24,149	11.0
Total	\$ 219,368	100.0%

INVESTMENT PERFORMANCE

The IMB calculates total rates of return using the time-weighted rate of return methodology. The time-weighted method determines the rate of return exclusive of the effects of participant contributions or withdrawals. Actual rates of return are net of fees.

Period	Actual	Target
One-year	9.7%	7.5%
Three-year	8.3%	7.5%
Five-year	9.3%	7.5%
Ten-year	7.7%	7.5%

Emergency Medical Services Retirement System

HISTORY

The Emergency Medical Services Retirement System (EMSRS) was created by the *Emergency Medical Services Retirement System Act* effective January 1, 2008, under *West Virginia Code §16-5V-4*. EMSRS members with benefits earned in the Public Employees' Retirement System (PERS) transferred their full membership and benefits under PERS to EMSRS on the effective date.

LIQUIDITY NEEDS

EMSRS is expected to be in a positive net cash flow position for the foreseeable future.

INVESTMENT OBJECTIVES

The investment objectives are as follows:

- Exceed the actuarial interest rate assumption of 7.5 percent per annum, net of fees.
- Maintain adequate liquidity to satisfy benefit payments while not subjecting EMSRS to an undue level of risk.

ASSET ALLOCATION

Based upon a determination of the appropriate risk tolerance, the Board adopted the following broad asset allocation guidelines for the assets managed for EMSRS. Base and Strategic Allocations are established on a market value basis.

Asset Class	Base Allocation	Strategic Allocation**
Domestic Equity	30.0%	27.5%
International Equity	30.0%	27.5%
Private Equity	0.0%	10.0%
Fixed Income	40.0%	15.0%
Opportunistic Income	0.0%	0.0%
Hedge Fund	0.0%	10.0%
Real Estate	0.0%	10.0%
Cash (included in Fixed Income above)	\$75,000*	

* *IMB Staff has authority to change the cash allocation plus or minus 10 percent, as necessary, in consultation with the appropriate representative(s) from EMSRS.*

** *The Allocation Committee has the authority to change the allocation within an established range around the Strategic Allocation for the public equity, fixed income, and opportunistic income asset classes. The range authority for public equities and fixed income is defined in the IMB's Investment Policy Statement for the Equity and Fixed Income Pools, respectively (Appendix C). The Base and Strategic Allocations to opportunistic income are 0%, but the Allocation Committee has the authority to make a range allocation of up to 5% to this asset class. Private Equity, Opportunistic Income, and Real Estate together comprise the Private Markets Pool.*

Emergency Medical Services Retirement System

FINANCIAL HIGHLIGHTS (in \$000s)

Progression of Plan Balance

June 30, 2017	\$	70,455
Contributions		3,160
Withdrawals		(1,561)
Net		<u>1,599</u>
Investment income		318
Net appreciation		6,549
June 30, 2018	\$	<u><u>78,921</u></u>

Asset Allocation

	Amount	Percent of Total
Domestic Equity	\$ 19,738	25.1%
International Qualified	6,658	8.4
International Equity	13,050	16.5
Short-Term Fixed Income	322	0.4
Total Return Fixed Income	7,628	9.7
Core Fixed Income	3,334	4.2
Private Markets	19,524	24.7
Hedge Fund	8,667	11.0
Total	<u>\$ 78,921</u>	<u>100.0%</u>

INVESTMENT PERFORMANCE

The IMB calculates total rates of return using the time-weighted rate of return methodology. The time-weighted method determines the rate of return exclusive of the effects of participant contributions or withdrawals. Actual rates of return are net of fees.

Period	Actual	Target
One-year	9.7%	7.5%
Three-year	8.3%	7.5%
Five-year	9.2%	7.5%
Ten-year	7.7%	7.5%

Judges' Retirement System

HISTORY

The Judges' Retirement System (JRS) was created in 1949.

LIQUIDITY NEEDS

JRS currently has slightly negative net cash flows.

INVESTMENT OBJECTIVES

The investment objectives are as follows:

- Exceed the actuarial interest rate assumption of 7.5 percent per annum, net of fees.
- Reduce the unfunded liability while maintaining adequate liquidity to satisfy benefit payments and not subjecting JRS to an undue level of risk.

ASSET ALLOCATION

Based upon a determination of the appropriate risk tolerance, the Board adopted the following broad asset allocation guidelines for the assets managed for JRS. Base and Strategic Allocations are established on a market value basis.

Asset Class	Base Allocation	Strategic Allocation**
Domestic Equity	30.0%	27.5%
International Equity	30.0%	27.5%
Private Equity	0.0%	10.0%
Fixed Income	40.0%	15.0%
Opportunistic Income	0.0%	0.0%
Hedge Fund	0.0%	10.0%
Real Estate	0.0%	10.0%
Cash (included in Fixed Income above)	\$500,000*	

* IMB Staff has authority to change the cash allocation plus or minus 10 percent, as necessary, in consultation with the appropriate representative(s) from JRS.

** The Allocation Committee has the authority to change the allocation within an established range around the Strategic Allocation for the public equity, fixed income, and opportunistic income asset classes. The range authority for public equities and fixed income is defined in the IMB's Investment Policy Statement for the Equity and Fixed Income Pools, respectively (Appendix C). The Base and Strategic Allocations to opportunistic income are 0%, but the Allocation Committee has the authority to make a range allocation of up to 5% to this asset class. Private Equity, Opportunistic Income, and Real Estate together comprise the Private Markets Pool.

Judges' Retirement System

FINANCIAL HIGHLIGHTS (in \$000s)

Progression of Plan Balance

June 30, 2017	\$	189,956
Contributions		960
Withdrawals		(4,804)
Net		(3,844)
Investment income		828
Net appreciation		17,544
June 30, 2018	\$	204,484

Asset Allocation

	Amount	Percent of Total
Domestic Equity	\$ 51,654	25.2%
International Qualified	17,640	8.6
International Equity	33,487	16.4
Short-Term Fixed Income	346	0.2
Total Return Fixed Income	19,426	9.5
Core Fixed Income	8,491	4.2
Private Markets	50,898	24.9
Hedge Fund	22,542	11.0
Total	\$ 204,484	100.0%

INVESTMENT PERFORMANCE

The IMB calculates total rates of return using the time-weighted rate of return methodology. The time-weighted method determines the rate of return exclusive of the effects of participant contributions or withdrawals. Actual rates of return are net of fees.

Period	Actual	Target
One-year	9.7%	7.5%
Three-year	8.3%	7.5%
Five-year	9.3%	7.5%
Ten-year	7.7%	7.5%
Twenty-year	6.9%	7.5%

Municipal Police Officers' and Firefighters' Retirement System

HISTORY

Municipal Police Officers' and Firefighters' Retirement System (MPFRS) was created in 2010 for the purpose of providing retirement benefits for municipal police officers and paid professional firefighters hired into covered employment by participating municipalities on or after January 1, 2010.

LIQUIDITY NEEDS

There are no anticipated liquidity needs at this time.

INVESTMENT OBJECTIVES

The investment objectives are as follows:

- Exceed the actuarial interest rate assumption of 7.5 percent per annum, net of fees.
- Maintain adequate liquidity to satisfy benefit payments while not subjecting MPFRS to an undue level of risk.

ASSET ALLOCATION

Based upon a determination of the appropriate risk tolerance, the Board adopted the following broad asset allocation guidelines for the assets managed for MPFRS. Base and Strategic Allocations are established on a market value basis.

Asset Class	Base Allocation	Strategic Allocation**
Domestic Equity	30.0%	27.5%
International Equity	30.0%	27.5%
Private Equity	0.0%	10.0%
Fixed Income	40.0%	15.0%
Opportunistic Income	0.0%	0.0%
Hedge Fund	0.0%	10.0%
Real Estate	0.0%	10.0%
Cash	\$0*	

* IMB Staff has authority to change the cash target up to 5 percent, as necessary, in consultation with the appropriate representative(s) from MPFRS.

** The Allocation Committee has the authority to change the allocation within an established range around the Strategic Allocation for the public equity, fixed income, and opportunistic income asset classes. The range authority for public equities and fixed income is defined in the IMB's Investment Policy Statement for the Equity and Fixed Income Pools, respectively (Appendix C). The Base and Strategic Allocations to opportunistic income are 0%, but the Allocation Committee has the authority to make a range allocation of up to 5% to this asset class. Private Equity, Opportunistic Income, and Real Estate together comprise the Private Markets Pool.

Municipal Police Officers' and Firefighters' Retirement System

FINANCIAL HIGHLIGHTS (in \$000s)

Progression of Plan Balance

June 30, 2017	\$	5,375
Contributions		1,920
Withdrawals		-
Net		1,920
Investment income		28
Net appreciation		520
June 30, 2018	\$	7,843

Asset Allocation

	Amount	Percent of Total
Domestic Equity	\$ 1,925	24.5%
International Qualified	634	8.1
International Equity	1,281	16.3
Short-Term Fixed Income	206	2.7
Total Return Fixed Income	747	9.5
Core Fixed Income	326	4.2
Private Markets	1,884	24.0
Hedge Fund	840	10.7
Total	\$ 7,843	100.0%

INVESTMENT PERFORMANCE

The IMB calculates total rates of return using the time-weighted rate of return methodology. The time-weighted method determines the rate of return exclusive of the effects of participant contributions or withdrawals. Actual rates of return are net of fees.

Period	Actual	Target
One-year	9.4%	7.5%
Three-year	8.0%	7.5%
Five-year	8.9%	7.5%

This page intentionally left blank

Municipal Policemen’s or Firemen’s Pension and Relief Funds

HISTORY

West Virginia Code §8-22-22 offers municipalities the ability to invest Policemen’s or Firemen’s Pension and Relief Funds established under West Virginia Code §8-22 in the investment pools operated by the IMB. Collectively all municipal plans will be grouped in this section and referred to as the Municipal Policemen’s or Firemen’s Pension and Relief Funds. The IMB received monies from the first municipality on July 17, 2013.

MUNICIPAL RETIREMENT PLANS INVESTMENT ALLOCATIONS

The IMB investment staff has created various model allocations that utilize percentage mixes of the investment pools operated by the IMB. The models can be found in the tables below. The IMB will work with the municipal retirement plan’s authorized party to determine the appropriate investment model based on information provided by the plan and Municipal Pensions Oversight Board that includes, but is not limited to, actuarial studies, cash flow projections, etc.

The potential investment models include:

Investment Type	Investment Allocation Percentages**					
	Model A	Model B	Model C	Model D	Model E	Model F
Equity	55%	70%	50%	65%	35%	55%
Fixed Income	15%	30%	30%	35%	35%	45%
Opportunistic Income	0%	0%	0%	0%	0%	0%
Hedge Fund	10%	0%	10%	0%	10%	0%
Private Equity	10%	0%	5%	0%	10%	0%
Real Estate	10%	0%	5%	0%	10%	0%
Cash	TBD	TBD	TBD	TBD	TBD	TBD

***The IMB may change the allocation within an established range for the public equity, fixed income, and opportunistic income asset classes. The range authority for public equities and fixed income is defined in the IMB’s Investment Policy Statement for the Equity and Fixed Income Pools, respectively. The model allocation to opportunistic income is 0%, but the IMB has the authority to make an allocation of up to 5% to this asset class. Private Equity, Opportunistic Income, and Real Estate together comprise the Private Markets Pool.*

The following IMB Investment Pools may be used for these Investment Types. The weighting and allocation of the Pools within each Investment Type is determined by the IMB Board of Trustees as expressed in the IMB Investment Policy Statement.

Equity

- Domestic Equity
- International Qualified
- International Equity

Fixed Income

- Total Return Fixed Income
- Core Fixed Income

Opportunistic Income

- Private Markets

Hedge Fund

- Hedge Fund

Private Equity

- Private Markets

Real Estate

- Private Markets

Cash

- Short-Term Fixed Income (exact allocations to be determined based on plan needs)

SUMMARY OF PLAN BALANCES (in \$000s)

There are currently two municipalities investing with the IMB. The Town of Belle is invested under Model A with a June 30, 2018, balance of \$1,514 and The City of Williamson is investing under Model C with a June 30, 2018, balance of \$1,124.

Public Employees' Retirement System

HISTORY

The Public Employees' Retirement System (PERS) was created in 1961.

LIQUIDITY NEEDS

PERS is expected to have modest liquidity needs of approximately 1.0 percent to 2.0 percent per year for the foreseeable future.

INVESTMENT OBJECTIVES

The investment objectives are as follows:

- Exceed the actuarial interest rate assumption of 7.5 percent per annum, net of fees.
- Reduce the unfunded liability while maintaining adequate liquidity to satisfy benefit payments and not subjecting PERS to an undue level of risk.

ASSET ALLOCATION

Based upon a determination of the appropriate risk tolerance, the Board adopted the following broad asset allocation guidelines for the assets managed for PERS. Base and Strategic Allocations are established on a market value basis.

Asset Class	Base Allocation	Strategic Allocation**
Domestic Equity	30.0%	27.5%
International Equity	30.0%	27.5%
Private Equity	0.0%	10.0%
Fixed Income	40.0%	15.0%
Opportunistic Income	0.0%	0.0%
Hedge Fund	0.0%	10.0%
Real Estate	0.0%	10.0%
Cash (included in Fixed Income above)	\$19,000,000*	

* IMB Staff has authority to change the cash allocation plus or minus 10 percent, as necessary, in consultation with the appropriate representative(s) from PERS.

** The Allocation Committee has the authority to change the allocation within an established range around the Strategic Allocation for the public equity, fixed income, and opportunistic income asset classes. The range authority for public equities and fixed income is defined in the IMB's Investment Policy Statement for the Equity and Fixed Income Pools, respectively (Appendix C). The Base and Strategic Allocations to opportunistic income are 0%, but the Allocation Committee has the authority to make a range allocation of up to 5% to this asset class. Private Equity, Opportunistic Income, and Real Estate together comprise the Private Markets Pool.

Public Employees' Retirement System

FINANCIAL HIGHLIGHTS (in \$000s)

Progression of Plan Balance

June 30, 2017	\$ 6,311,880
Contributions	203,325
Withdrawals	(402,810)
Net	<u>(199,485)</u>
Investment income	27,433
Net appreciation	578,870
June 30, 2018	<u><u>\$ 6,718,698</u></u>

Asset Allocation

	Amount	Percent of Total
Domestic Equity	\$ 1,695,975	25.2%
International Qualified	570,269	8.5
International Equity	1,113,988	16.6
Short-Term Fixed Income	3,435	0.1
Total Return Fixed Income	637,623	9.5
Core Fixed Income	278,378	4.1
Private Markets	1,677,031	25.0
Hedge Fund	741,999	11.0
Total	<u><u>\$ 6,718,698</u></u>	<u><u>100.0%</u></u>

INVESTMENT PERFORMANCE

The IMB calculates total rates of return using the time-weighted rate of return methodology. The time-weighted method determines the rate of return exclusive of the effects of participant contributions or withdrawals. Actual rates of return are net of fees.

Period	Actual	Target
One-year	9.7%	7.5%
Three-year	8.3%	7.5%
Five-year	9.3%	7.5%
Ten-year	7.7%	7.5%
Twenty-year	6.9%	7.5%

State Police Death, Disability and Retirement Fund

HISTORY

The State Police Death, Disability and Retirement Fund (SPDDRF) was created in 1925.

LIQUIDITY NEEDS

SPDDRF is now a closed plan and is expected to experience an increasingly negative cash flow position in the near future.

INVESTMENT OBJECTIVES

The investment objectives are as follows:

- Exceed the actuarial interest rate assumption of 7.5 percent per annum, net of fees.
- Reduce the unfunded liability while maintaining adequate liquidity to satisfy benefit payments and not subjecting SPDDRF to an undue level of risk.

ASSET ALLOCATION

Based upon a determination of the appropriate risk tolerance, the Board adopted the following broad asset allocation guidelines for the assets managed for SPDDRF. Base and Strategic Allocations are established on a market value basis.

Asset Class	Base Allocation	Strategic Allocation**
Domestic Equity	30.0%	27.5%
International Equity	30.0%	27.5%
Private Equity	0.0%	10.0%
Fixed Income	40.0%	15.0%
Opportunistic Income	0.0%	0.0%
Hedge Fund	0.0%	10.0%
Real Estate	0.0%	10.0%
Cash (included in Fixed Income above)	\$3,800,000*	

* IMB Staff has authority to change the cash allocation plus or minus 10 percent, as necessary, in consultation with the appropriate representative(s) from SPDDRF.

** The Allocation Committee has the authority to change the allocation within an established range around the Strategic Allocation for the public equity, fixed income, and opportunistic income asset classes. The range authority for public equities and fixed income is defined in the IMB's Investment Policy Statement for the Equity and Fixed Income Pools, respectively (Appendix C). The Base and Strategic Allocations to opportunistic income are 0%, but the Allocation Committee has the authority to make a range allocation of up to 5% to this asset class. Private Equity, Opportunistic Income, and Real Estate together comprise the Private Markets Pool.

State Police Death, Disability and Retirement Fund

FINANCIAL HIGHLIGHTS (in \$000s)

Progression of Plan Balance

June 30, 2017	\$ 641,748
Contributions	25,870
Withdrawals	(45,758)
Net	<u>(19,888)</u>
Investment income	2,707
Net appreciation	58,232
June 30, 2018	<u><u>\$ 682,799</u></u>

Asset Allocation

	Amount	Percent of Total
Domestic Equity	\$ 166,355	24.3%
International Qualified	58,103	8.5
International Equity	107,614	15.8
Short-Term Fixed Income	24,909	3.6
Total Return Fixed Income	61,258	9.0
Core Fixed Income	26,667	3.9
Private Markets	165,045	24.2
Hedge Fund	72,848	10.7
Total	<u><u>\$ 682,799</u></u>	<u><u>100.0%</u></u>

INVESTMENT PERFORMANCE

The IMB calculates total rates of return using the time-weighted rate of return methodology. The time-weighted method determines the rate of return exclusive of the effects of participant contributions or withdrawals. Actual rates of return are net of fees.

Period	Actual	Target
One-year	9.7%	7.5%
Three-year	8.3%	7.5%
Five-year	9.2%	7.5%
Ten-year	7.7%	7.5%
Twenty-year	6.9%	7.5%

State Police Retirement System

HISTORY

The State Police Retirement System (SPRS) was created in 1994.

LIQUIDITY NEEDS

SPRS is expected to be in a positive net cash flow position for the foreseeable future.

INVESTMENT OBJECTIVES

The investment objectives are as follows:

- Exceed the actuarial interest rate assumption of 7.5 percent per annum, net of fees.
- Reduce the unfunded liability while maintaining adequate liquidity to satisfy benefit payments and not subjecting SPRS to an undue level of risk.

ASSET ALLOCATION

Based upon a determination of the appropriate risk tolerance, the Board adopted the following broad asset allocation guidelines for the assets managed for SPRS. Base and Strategic Allocations are established on a market value basis.

Asset Class	Base Allocation	Strategic Allocation**
Domestic Equity	30.0%	27.5%
International Equity	30.0%	27.5%
Private Equity	0.0%	10.0%
Fixed Income	40.0%	15.0%
Opportunistic Income	0.0%	0.0%
Hedge Fund	0.0%	10.0%
Real Estate	0.0%	10.0%
Cash (included in Fixed Income above)	\$75,000*	

* IMB Staff has authority to change the cash allocation plus or minus 10 percent, as necessary, in consultation with the appropriate representative(s) from SPRS.

** The Allocation Committee has the authority to change the allocation within an established range around the Strategic Allocation for the public equity, fixed income, and opportunistic income asset classes. The range authority for public equities and fixed income is defined in the IMB's Investment Policy Statement for the Equity and Fixed Income Pools, respectively (Appendix C). The Base and Strategic Allocations to opportunistic income are 0%, but the Allocation Committee has the authority to make a range allocation of up to 5% to this asset class. Private Equity, Opportunistic Income, and Real Estate together comprise the Private Markets Pool.

State Police Retirement System

FINANCIAL HIGHLIGHTS (in \$000s)

Progression of Plan Balance

June 30, 2017	\$ 166,483
Contributions	7,505
Withdrawals	(1,379)
Net	6,126
Investment income	758
Net appreciation	15,545
June 30, 2018	\$ 188,912

Asset Allocation

	Amount	Percent of Total
Domestic Equity	\$ 47,530	25.1%
International Qualified	15,854	8.4
International Equity	31,312	16.6
Short-Term Fixed Income	584	0.3
Total Return Fixed Income	18,235	9.7
Core Fixed Income	7,933	4.2
Private Markets	46,707	24.7
Hedge Fund	20,757	11.0
Total	\$ 188,912	100.0%

INVESTMENT PERFORMANCE

The IMB calculates total rates of return using the time-weighted rate of return methodology. The time-weighted method determines the rate of return exclusive of the effects of participant contributions or withdrawals. Actual rates of return are net of fees.

Period	Actual	Target
One-year	9.7%	7.5%
Three-year	8.3%	7.5%
Five-year	9.3%	7.5%
Ten-year	7.7%	7.5%
Twenty-year	6.8%	7.5%

Teachers' Retirement System

HISTORY

The Teachers' Retirement System (TRS) was created in 1941. It was closed to new members in 1991, but reopened to first-time hires as of July 1, 2005. Employees hired from 1991 through June 30, 2005, joined the Teachers' Defined Contribution Plan (TDC). In the spring of 2008, more than 78 percent of the participants in the Teachers' Defined Contribution Plan elected to transfer their TDC account balance to TRS and become participants in TRS. This transfer occurred in July 2008.

LIQUIDITY NEEDS

TRS has a net negative cash flow position, and will likely continue to have substantial liquidity needs of at least 10 percent per year.

INVESTMENT OBJECTIVES

The investment objectives are as follows:

- Exceed the actuarial interest rate assumption of 7.5 percent per annum, net of fees.
- Reduce the unfunded liability while maintaining adequate liquidity to satisfy benefit payments and not subjecting TRS to an undue level of risk.

ASSET ALLOCATION

Based upon a determination of the appropriate risk tolerance, the Board adopted the following broad asset allocation guidelines for the assets managed for TRS. Base and Strategic Allocations are established on a market value basis.

Asset Class	Base Allocation	Strategic Allocation**
Domestic Equity	30.0%	27.5%
International Equity	30.0%	27.5%
Private Equity	0.0%	10.0%
Fixed Income	40.0%	15.0%
Opportunistic Income	0.0%	0.0%
Hedge Fund	0.0%	10.0%
Real Estate	0.0%	10.0%
Cash (included in Fixed Income above)	\$35,000,000*	

* *IMB Staff has authority to change the cash allocation plus or minus 10 percent, as necessary, in consultation with the appropriate representative(s) from TRS.*

** *The Allocation Committee has the authority to change the allocation within an established range around the Strategic Allocation for the public equity, fixed income, and opportunistic income asset classes. The range authority for public equities and fixed income is defined in the IMB's Investment Policy Statement for the Equity and Fixed Income Pools, respectively (Appendix C). The Base and Strategic Allocations to opportunistic income are 0%, but the Allocation Committee has the authority to make a range allocation of up to 5% to this asset class. Private Equity, Opportunistic Income, and Real Estate together comprise the Private Markets Pool.*

Teachers' Retirement System

FINANCIAL HIGHLIGHTS (in \$000s)

Progression of Plan Balance

June 30, 2017	\$ 7,259,593
Contributions	492,300
Withdrawals	(748,318)
Net	<u>(256,018)</u>
Investment income	31,046
Net appreciation	657,167
June 30, 2018	<u><u>\$ 7,691,788</u></u>

Asset Allocation

	Amount	Percent of Total
Domestic Equity	\$ 1,915,121	24.9%
International Qualified	642,773	8.4
International Equity	1,260,306	16.4
Short-Term Fixed Income	118,089	1.5
Total Return Fixed Income	714,138	9.3
Core Fixed Income	310,183	4.0
TRS Annuity	(130)	0.0
Private Markets	1,893,364	24.6
Hedge Fund	837,944	10.9
Total	<u><u>\$ 7,691,788</u></u>	<u>100.0%</u>

INVESTMENT PERFORMANCE

The IMB calculates total rates of return using the time-weighted rate of return methodology. The time-weighted method determines the rate of return exclusive of the effects of participant contributions or withdrawals. Actual rates of return are net of fees.

Period	Actual	Target
One-year	9.7%	7.5%
Three-year	8.2%	7.5%
Five-year	9.2%	7.5%
Ten-year	7.5%	7.5%
Twenty-year	6.7%	7.5%

Board of Risk and Insurance Management Fund

HISTORY

The Board of Risk and Insurance Management (BRIM) is a State entity charged with providing insurance coverage to all State agencies, as well as cities, counties, and non-profit organizations throughout West Virginia. BRIM also provides a coal mine subsidence reinsurance program that allows homeowners and businesses to obtain insurance coverage up to \$75,000 for collapses and damage caused by underground coal mines.

LIQUIDITY NEEDS

According to representatives of the Plan, there may be some current liquidity needs in the next few fiscal years, not to exceed 10 percent in any given year. BRIM requires a cash reserve account for collateral purposes amounting to approximately 15 percent of the funds for investment. This amount is held in the Consolidated Fund, which is administered by the West Virginia Board of Treasury Investments and utilized at BRIM's discretion.

INVESTMENT OBJECTIVES

The investment objectives are as follows:

- Provide adequate liquidity to meet the cash flow requirements.
- Given the expected infinite life of the fund, allow for growth of assets in an amount at least equal to expected inflation.

ASSET ALLOCATION

Based upon a determination of the appropriate risk tolerance, the Board adopted the following broad asset allocation guidelines for the assets managed for BRIM. Base and Strategic Allocations are established on a market value basis.

Asset Class	Base Allocation	Strategic Allocation**
Domestic Equity	10.0%	15.0%
International Equity	10.0%	15.0%
Fixed Income	80.0%	35.0%
TIPS	0.0%	10.0%
Hedge Fund	0.0%	20.0%
Cash	\$0	5.0%

** IMB Staff has authority to change the cash target up to 5 percent, as necessary, in consultation with the appropriate representative(s) from BRIM.*

*** The Allocation Committee has the authority to change the allocation within an established range around the Strategic Allocation for the public equity and fixed income asset classes. The range authority for public equities and fixed income is defined in the IMB's Investment Policy Statement for the Equity and Fixed Income Pools, respectively (Appendix C).*

Board of Risk and Insurance Management Fund

FINANCIAL HIGHLIGHTS (in \$000s)

Progression of Plan Balance

June 30, 2017	\$ 144,341
Contributions	-
Withdrawals	-
Net	-
Investment income	1,600
Net appreciation	5,647
June 30, 2018	<u>\$ 151,588</u>

Asset Allocation

	Amount	Percent of Total
Domestic Equity	\$ 22,317	14.8%
International Nonqualified	7,761	5.1
International Equity	14,337	9.5
Short-Term Fixed Income	7,629	5.0
Total Return Fixed Income	35,033	23.1
Core Fixed Income	15,310	10.1
TIPS	15,381	10.1
Hedge Fund	33,820	22.3
Total	<u>\$ 151,588</u>	<u>100.0%</u>

INVESTMENT PERFORMANCE

The IMB calculates total rates of return using the time-weighted rate of return methodology. The time-weighted method determines the rate of return exclusive of the effects of participant contributions or withdrawals. Actual rates of return are net of fees. A target rate of return has not been set for this plan.

Period	Actual
One-year	5.0%
Three-year	4.5%
Five-year	5.0%
Ten-year	5.6%

Coal Workers' Pneumoconiosis Fund

HISTORY

The Coal Workers' Pneumoconiosis Fund (CWPF) was formed in 1974 to provide insurance coverage to coal operators for their potential liability under the *Federal Coal Mine Health and Safety Act of 1969*. Upon termination of the West Virginia Workers' Compensation Commission, the assets and liabilities of CWPF remained with the State for administration of the run-off of the liabilities incurred during the years of operation. Effective January 1, 2006, insurance coverage for liabilities incurred under the *Federal Coal Mine Health and Safety Act of 1969* is provided by private insurance carriers and is no longer available through the State.

LIQUIDITY NEEDS

Liquidity needs are actuarially determined based on the run-off of liabilities, which are assessed annually.

INVESTMENT OBJECTIVES

The investment objectives are as follows:

- Exceed the actuarial interest rate assumption of 5.0 percent per annum, net of fees.
- Preserve the current surplus position.

ASSET ALLOCATION

Based upon a determination of the appropriate risk tolerance, the Board adopted the following broad asset allocation guidelines for the assets managed for CWPF. Base and Strategic Allocations are established on a market value basis.

Asset Class	Base Allocation	Strategic Allocation**
Domestic Equity	15.0%	15.0%
International Equity	15.0%	15.0%
Fixed Income	70.0%	35.0%
TIPS	0.0%	10.0%
Hedge Fund	0.0%	20.0%
Cash	0.0%	5.0%

* IMB Staff has authority to change the cash target up to 5 percent, as necessary, in consultation with the appropriate representative(s) from CWPF.

** The Allocation Committee has the authority to change the allocation within an established range around the Strategic Allocation for the public equity and fixed income asset classes. The range authority for public equities and fixed income is defined in the IMB's Investment Policy Statement for the Equity and Fixed Income Pools, respectively (Appendix C).

Coal Workers' Pneumoconiosis Fund

FINANCIAL HIGHLIGHTS (in \$000s)

Progression of Plan Balance

June 30, 2017	\$ 250,631
Contributions	1,080
Withdrawals	(18,432)
Net	<u>(17,352)</u>
Investment income	2,695
Net appreciation	9,823
June 30, 2018	<u><u>\$ 245,797</u></u>

Asset Allocation

	Amount	Percent of Total
Domestic Equity	\$ 36,295	14.8%
International Nonqualified	13,361	5.4
International Equity	22,553	9.2
Short-Term Fixed Income	11,120	4.5
Total Return Fixed Income	56,952	23.2
Core Fixed Income	24,859	10.1
TIPS	25,559	10.4
Hedge Fund	55,098	22.4
Total	<u><u>\$ 245,797</u></u>	<u><u>100.0%</u></u>

INVESTMENT PERFORMANCE

The IMB calculates total rates of return using the time-weighted rate of return methodology. The time-weighted method determines the rate of return exclusive of the effects of participant contributions or withdrawals. Actual rates of return are net of fees.

Period	Actual	Target
One-year	5.0%	5.0%
Three-year	4.5%	5.0%
Five-year	5.1%	5.0%
Ten-year	5.1%	5.0%
Twenty-year	5.7%	5.0%

Public Employees Insurance Agency

HISTORY

The Public Employees Insurance Agency (PEIA) is a State entity charged with providing health insurance coverage to eligible public employees.

LIQUIDITY NEEDS

PEIA projects net cash outflows from operations every year going forward. This anticipated liquidity need within a three-year time horizon indicates a substantial allocation to cash is appropriate. PEIA currently manages part of its cash allocation and invests this amount with the West Virginia Board of Treasury Investments. The IMB collaborates with management at PEIA to monitor combined cash levels.

INVESTMENT OBJECTIVES

The investment objectives are as follows:

- Provide adequate liquidity to meet the cash flow requirements.
- Given the expected infinite life of the fund, allow for growth of assets in an amount at least equal to expected inflation.

ASSET ALLOCATION

Based upon a determination of the appropriate risk tolerance, the Board adopted the following broad asset allocation guidelines for the assets managed for PEIA. Base and Strategic Allocations are established on a market value basis.

Asset Class	Base Allocation	Strategic Allocation**
Domestic Equity	10.0%	12.5%
International Equity	10.0%	12.5%
Fixed Income	80.0%	40.0%
TIPS	0.0%	15.0%
Hedge Fund	0.0%	20.0%
Cash	0.0%*	0.0%

** Not all cash is invested with the IMB. IMB Staff has authority to change the cash target up to 5 percent, as necessary, in consultation with the appropriate representative(s) from PEIA.*

*** The Allocation Committee has the authority to change the allocation within an established range around the Strategic Allocation for the public equity and fixed income asset classes. The range authority for public equities and fixed income is defined in the IMB's Investment Policy Statement for the Equity and Fixed Income Pools, respectively (Appendix C).*

Public Employees Insurance Agency

FINANCIAL HIGHLIGHTS (in \$000s)

Progression of Plan Balance

June 30, 2017	\$ 153,908
Contributions	38,000
Withdrawals	-
Net	38,000
Investment income	1,917
Net appreciation	5,001
June 30, 2018	\$ 198,826

Asset Allocation

	Amount	Percent of Total
Domestic Equity	\$ 24,462	12.2%
International Nonqualified	8,244	4.1
International Equity	16,061	8.1
Short Term Fixed Income	1	0.0
Total Return Fixed Income	52,652	26.5
Core Fixed Income	22,967	11.6
TIPS	30,155	15.2
Hedge Fund	44,284	22.3
Total	\$ 198,826	100.0%

INVESTMENT PERFORMANCE

The IMB calculates total rates of return using the time-weighted rate of return methodology. The time-weighted method determines the rate of return exclusive of the effects of participant contributions or withdrawals. Actual rates of return are net of fees. A target rate of return has not been set for this plan.

Period	Actual
One-year	4.6%
Three-year	4.4%
Five-year	5.0%
Ten-year	5.2%

West Virginia Retiree Health Benefit Trust Fund

HISTORY

The West Virginia Retiree Health Benefit Trust Fund (RHBTF) was created under *West Virginia Code §5-16D* for the purpose of providing for and administering retiree post-employment health care benefits, and the respective revenues and costs of those benefits as a cost sharing multiple employer plan.

LIQUIDITY NEEDS

RHBTF assets managed by the IMB are expected to be long-term in nature and have no liquidity needs as deemed by PEIA, which administers these assets. Short-term projected cash needs for RHBTF are calculated by PEIA and held in reserve in PEIA cash accounts.

INVESTMENT OBJECTIVES

The investment objectives are as follows:

- Exceed the investment return assumption of 7.5 percent per annum, net of fees.
- To provide stable, long term growth of assets, while seeking to minimize the risk of loss.

ASSET ALLOCATION

Based upon a determination of the appropriate risk tolerance, the Board adopted the following broad asset allocation guidelines for the assets managed for RHBTF. Base and Strategic Allocations are established on a market value basis.

Asset Class	Base Allocation	Strategic Allocation**
Domestic Equity	30.0%	27.5%
International Equity	30.0%	27.5%
Private Equity	0.0%	10.0%
Fixed Income	40.0%	15.0%
Opportunistic Income	0.0%	0.0%
Hedge Funds	0.0%	10.0%
Real Estate	0.0%	10.0%
Cash	\$0*	

* Cash levels to be reviewed as needed, at least annually, collaboratively with management staff from PEIA. IMB Staff has authority to change the cash target up to 5 percent, as necessary, in consultation with the appropriate representative(s) from RHBTF.

** The Allocation Committee has the authority to change the allocation within an established range around the Strategic Allocation for the public equity, fixed income, and opportunistic income asset classes. The range authority for public equities and fixed income is defined in the IMB's Investment Policy Statement for the Equity and Fixed Income Pools, respectively (Appendix C). The Base and Strategic Allocations to opportunistic income are 0%, but the Allocation Committee has the authority to make a range allocation of up to 5% to this asset class. Private Equity, Opportunistic Income, and Real Estate together comprise the Private Markets Pool.

West Virginia Retiree Health Benefit Trust Fund

FINANCIAL HIGHLIGHTS (in \$000s)

Progression of Plan Balance

June 30, 2017	\$ 735,817
Contributions	95,000
Withdrawals	-
Net	95,000
Investment income	3,513
Net appreciation	69,483
June 30, 2018	\$ 903,813

Asset Allocation

	Amount	Percent of Total
Domestic Equity	\$ 228,115	25.3%
International Nonqualified	76,159	8.4
International Equity	149,920	16.6
Total Return Fixed Income	87,553	9.7
Core Fixed Income	38,256	4.2
Private Markets	224,373	24.8
Hedge Fund	99,437	11.0
Total	\$ 903,813	100.0%

INVESTMENT PERFORMANCE

The IMB calculates total rates of return using the time-weighted rate of return methodology. The time-weighted method determines the rate of return exclusive of the effects of participant contributions or withdrawals. Actual rates of return are net of fees. A target rate of return has not been set for this plan.

Period	Actual
One-year	9.6%
Three-year	8.3%
Five-year	9.2%
Ten-year	8.6%

Workers' Compensation Old Fund

HISTORY

Formed in January 2006, the Workers' Compensation Old Fund (Old Fund) assumed responsibility for payment of all workers' compensation claims and liabilities incurred by the former West Virginia Workers' Compensation Commission prior to July 1, 2005. After July 1, 2005, workers' compensation claims or liabilities incurred are covered by private insurance carriers.

LIQUIDITY NEEDS

Liquidity needs are uncertain due to legislation that reduced funding sources. Regardless, the Old Fund is expected to have a negative net cash flow position. Liquidity needs for short-term cash (amount necessary for approximately 12 months' worth of anticipated claims) will continue to be reviewed annually with the West Virginia Office of the Insurance Commissioner. Currently, a cash balance is held in the Old Fund in an amount equal to 5 percent of assets which should be adequate to meet the needs of the Old Fund even with funding uncertainty.

INVESTMENT OBJECTIVES

The investment objectives are as follows:

- Preservation of principal and minimization of volatility, while still achieving some investment earnings growth adjusted for inflation.
- Provide adequate liquidity to meet cash flow requirements.

ASSET ALLOCATION

Based upon a determination of the appropriate risk tolerance, the Board adopted the following broad asset allocation guidelines for the assets managed for the Old Fund. Base and Strategic Allocations are established on a market value basis.

Asset Class	Base Allocation	Strategic Allocation**
Domestic Equity	15.0%	15.0%
International Equity	15.0%	15.0%
Fixed Income	70.0%	40.0%
TIPS	0.0%	10.0%
Hedge Funds	0.0%	15.0%
Cash (included in Fixed Income above)	\$75,000,000*	5.0%

* Cash levels to be reviewed as needed, at least annually, collaboratively with management staff from the West Virginia Office of the Insurance Commissioner.

** The Allocation Committee has the authority to change the allocation within an established range around the Strategic Allocation for the public equity and fixed income asset classes. The range authority for public equities and fixed income is defined in the IMB's Investment Policy Statement for the Equity and Fixed Income Pools, respectively (Appendix C).

Workers' Compensation Old Fund

FINANCIAL HIGHLIGHTS (in \$000s)

Progression of Plan Balance

June 30, 2017	\$ 1,260,911
Contributions	12,899
Withdrawals	(147,744)
Net	<u>(134,845)</u>
Investment income	15,099
Net appreciation	44,340
June 30, 2018	<u><u>\$ 1,185,505</u></u>

Asset Allocation

	Amount	Percent of Total
Domestic Equity	\$ 176,003	14.7%
International Nonqualified	66,991	5.7
International Equity	107,375	9.1
Short-Term Fixed Income	45,129	3.8
Total Return Fixed Income	323,583	27.3
Core Fixed Income	140,536	11.9
TIPS	124,587	10.5
Hedge Fund	201,301	17.0
Total	<u><u>\$ 1,185,505</u></u>	<u><u>100.0%</u></u>

INVESTMENT PERFORMANCE

The IMB calculates total rates of return using the time-weighted rate of return methodology. The time-weighted method determines the rate of return exclusive of the effects of participant contributions or withdrawals. Actual rates of return are net of fees. A target rate of return has not been set for this plan.

Period	Actual
One-year	4.8%
Three-year	4.9%
Five-year	4.9%
Ten-year	4.6%

Workers' Compensation Self-Insured Employer Guaranty Risk Pool

HISTORY

The Workers' Compensation Self-Insured Guaranty Risk Pool (Self-Insured Pool) was established on January 1, 2006, for the purpose of paying the workers' compensation claims of defaulted self-insured employers occurring on or after July 1, 2004. It consists of those funds transferred, and any future funds collected, as provided by law.

LIQUIDITY NEEDS

As all current and active self-insured employers are required to provide a bond, security, or other collateral to the West Virginia Office of the Insurance Commissioner in the event of a deteriorating financial condition, it is anticipated that the liquidity position of this fund should remain stable. A small cash reserve will be held in the event of an unforeseen emergency, as is possible with an insurance program of this kind.

INVESTMENT OBJECTIVES

The investment objectives are as follows:

- Provide adequate liquidity to meet cash flow requirements.
- Given the expected infinite life of the fund, allow for growth of assets in an amount at least equal to expected inflation.

ASSET ALLOCATION

Based upon a determination of the appropriate risk tolerance, the Board adopted the following broad asset allocation guidelines for the assets managed for the Self-Insured Pool. Base and Strategic Allocations are established on a market value basis.

Asset Class	Base Allocation	Strategic Allocation**
Domestic Equity	15.0%	15.0%
International Equity	15.0%	15.0%
Fixed Income	70.0%	35.0%
TIPS	0.0%	10.0%
Hedge Fund	0.0%	20.0%
Cash	0.0%	5.0%

** IMB Staff has authority to change the cash target up to 5 percent, as necessary, in consultation with the appropriate representative(s) from the Self-Insured Pool.*

*** The Allocation Committee has the authority to change the allocation within an established range around the Strategic Allocation for the public equity and fixed income asset classes. The range authority for public equities and fixed income is defined in the IMB's Investment Policy Statement for the Equity and Fixed Income Pools, respectively (Appendix C).*

Workers' Compensation Self-Insured Employer Guaranty Risk Pool

FINANCIAL HIGHLIGHTS (in \$000s)

Progression of Plan Balance

June 30, 2017	\$	33,211
Contributions		673
Withdrawals		(1,657)
Net		(984)
Investment income		366
Net appreciation		1,315
June 30, 2018	\$	33,908

Asset Allocation

	Amount	Percent of Total
Domestic Equity	\$ 4,970	14.7%
International Nonqualified	1,801	5.3
International Equity	3,127	9.2
Short-Term Fixed Income	1,425	4.2
Total Return Fixed Income	7,999	23.6
Core Fixed Income	3,487	10.3
TIPS	3,494	10.3
Hedge Fund	7,605	22.4
Total	\$ 33,908	100.0%

INVESTMENT PERFORMANCE

The IMB calculates total rates of return using the time-weighted rate of return methodology. The time-weighted method determines the rate of return exclusive of the effects of participant contributions or withdrawals. Actual rates of return are net of fees. A target rate of return has not been set for this plan.

Period	Actual
One-year	5.0%
Three-year	4.6%
Five-year	5.1%
Ten-year	4.2%

Workers' Compensation Self-Insured Employer Security Risk Pool

HISTORY

The Workers' Compensation Self-Insured Security Risk Pool (Security Pool) was established on January 1, 2006, and initially funded with the IMB in March 2014, for the purpose of paying the workers' compensation claims of defaulted self-insured employers with dates of injury occurring prior to July 1, 2004, provided that the default of the self-insured employer took place on or after the creation of the Security Pool on January 1, 2006. It consists of those funds transferred, and any future funds collected, as provided by law.

LIQUIDITY NEEDS

It is anticipated that the Security Pool will have a net cash inflow over the next five years. A small cash reserve will be held in the event of an unforeseen emergency, as is possible with an insurance program of this kind.

INVESTMENT OBJECTIVES

The investment objectives are as follows:

- Provide adequate liquidity to meet cash flow requirements.
- Given the expected infinite life of the fund, allow for growth of assets in an amount at least equal to expected inflation.

ASSET ALLOCATION

Based upon a determination of the appropriate risk tolerance, the Board adopted the following broad asset allocation guidelines for the assets managed for the Security Pool. Base and Strategic Allocations are established on a market value basis.

Asset Class	Base Allocation	Strategic Allocation**
Domestic Equity	15.0%	15.0%
International Equity	15.0%	15.0%
Fixed Income	70.0%	35.0%
TIPS	0.0%	10.0%
Hedge Fund	0.0%	20.0%
Cash	0.0%	5.0%

** IMB Staff has authority to change the cash target up to 5 percent, as necessary, in consultation with the appropriate representative(s) from the Security Pool.*

*** The Allocation Committee has the authority to change the allocation within an established range around the Strategic Allocation for the public equity and fixed income asset classes. The range authority for public equities and fixed income is defined in the IMB's Investment Policy Statement for the Equity and Fixed Income Pools, respectively (Appendix C).*

Workers' Compensation Self-Insured Employer Security Risk Pool

FINANCIAL HIGHLIGHTS (in \$000s)

Progression of Plan Balance

June 30, 2017	\$	53,908
Contributions		796
Withdrawals		(4,210)
Net		(3,414)
Investment income		582
Net appreciation		2,128
June 30, 2018	\$	53,204

Asset Allocation

	Amount	Percent of Total
Domestic Equity	\$ 7,885	14.9%
International Nonqualified	2,891	5.4
International Equity	4,920	9.2
Short-Term Fixed Income	2,215	4.2
Total Return Fixed Income	12,315	23.1
Core Fixed Income	5,481	10.3
TIPS	5,529	10.4
Hedge Fund	11,968	22.5
Total	\$ 53,204	100.0%

INVESTMENT PERFORMANCE

The IMB calculates total rates of return using the time-weighted rate of return methodology. The time-weighted method determines the rate of return exclusive of the effects of participant contributions or withdrawals. Actual rates of return are net of fees. A target rate of return has not been set for this plan.

Period	Actual
One-year	5.0%
Three-year	4.7%

Workers' Compensation Uninsured Employers' Fund

HISTORY

The Workers' Compensation Uninsured Employers' Fund (Uninsured Fund) was established January 1, 2006, to provide for the benefit of injured workers, whose employers failed to provide mandatory workers' compensation coverage. The Uninsured Fund received initial funding of \$5 million by proclamation of the Governor.

LIQUIDITY NEEDS

There are minimal liquidity needs projected at this time as cash inflows (premiums) are expected to be sufficiently above cash outflows (claims) for the near future. At the Uninsured Fund's request, moderate liquidity needs are being reserved in anticipation of cash that may be needed for a settlement program. A small cash reserve will be held in the event of an unforeseen emergency, as is possible with an insurance program of this kind.

INVESTMENT OBJECTIVES

The investment objectives are as follows:

- Provide adequate liquidity to meet cash flow requirements.
- Given the expected infinite life of the fund, allow for growth of assets in an amount at least equal to expected inflation.

ASSET ALLOCATION

Based upon a determination of the appropriate risk tolerance, the Board adopted the following broad asset allocation guidelines for the assets managed for the Uninsured Fund. Base and Strategic Allocations are established on a market value basis.

Asset Class	Base Allocation	Strategic Allocation**
Domestic Equity	15.0%	15.0%
International Equity	15.0%	15.0%
Fixed Income	70.0%	30.0%
TIPS	0.0%	10.0%
Hedge Fund	0.0%	20.0%
Cash	0.0%	10.0%

* IMB Staff has authority to change the cash target up to 5 percent, as necessary, in consultation with the appropriate representative(s) from the Uninsured Fund.

** The Allocation Committee has the authority to change the allocation within an established range around the Strategic Allocation for the public equity and fixed income asset classes. The range authority for public equities and fixed income is defined in the IMB's Investment Policy Statement for the Equity and Fixed Income Pools, respectively (Appendix C).

Workers' Compensation Uninsured Employers' Fund

FINANCIAL HIGHLIGHTS (in \$000s)

Progression of Plan Balance

June 30, 2017	\$ 11,797
Contributions	725
Withdrawals	(235)
Net	490
Investment income	123
Net appreciation	471
June 30, 2018	\$ 12,881

Asset Allocation

	Amount	Percent of Total
Domestic Equity	\$ 1,890	14.6%
International Nonqualified	639	5.0
International Equity	1,236	9.6
Short-Term Fixed Income	1,260	9.8
Total Return Fixed Income	2,545	19.8
Core Fixed Income	1,115	8.7
TIPS	1,320	10.2
Hedge Fund	2,876	22.3
Total	\$ 12,881	100.0%

INVESTMENT PERFORMANCE

The IMB calculates total rates of return using the time-weighted rate of return methodology. The time-weighted method determines the rate of return exclusive of the effects of participant contributions or withdrawals. Actual rates of return are net of fees. A target rate of return has not been set for this plan.

Period	Actual
One-year	5.1%
Three-year	4.4%
Five-year	4.9%
Ten-year	4.0%

Berkeley County Development Authority

HISTORY

Berkeley County is the second most populous county in West Virginia and benefits economically from its close proximity to the Washington, D.C. metropolitan area. The Berkeley County Development Authority (BCDA) seeks to attract business through tax credits and financing programs.

LIQUIDITY NEEDS

BCDA is expected to experience no cash outflows for the next five years. Large cash inflows are expected but on an ad hoc basis emanating from land sales in excess of expenses.

INVESTMENT OBJECTIVES

The investment objectives are as follows:

- Meet or exceed 7.5 percent per annum, net of fees.
- Achieve long-term growth by investing in a well-diversified portfolio.

ASSET ALLOCATION

Based upon a determination of the appropriate risk tolerance, the Board adopted the following broad asset allocation guidelines for the assets managed for BCDA. Base and Strategic Allocations are established on a market value basis.

Asset Class	Base Allocation	Strategic Allocation**
Domestic Equity	30.0%	27.5%
International Equity	30.0%	27.5%
Private Equity	0.0%	10.0%
Fixed Income	40.0%	15.0%
Opportunistic Income	0.0%	0.0%
Hedge Fund	0.0%	10.0%
Real Estate	0.0%	10.0%
Cash	\$0*	

* IMB Staff has authority to change the cash allocation plus or minus 10 percent, as necessary, in consultation with the appropriate representative(s) from BCDA.

** The Allocation Committee has the authority to change the allocation within an established range around the Strategic Allocation for the public equity, fixed income, and opportunistic income asset classes. The range authority for public equities and fixed income is defined in the IMB's Investment Policy Statement for the Equity and Fixed Income Pools, respectively (Appendix C). The Base and Strategic Allocations to opportunistic income are 0%, but the Allocation Committee has the authority to make a range allocation of up to 5% to this asset class. Private Equity, Opportunistic Income, and Real Estate together comprise the Private Markets Pool.

Berkeley County Development Authority

FINANCIAL HIGHLIGHTS (in \$000s)

Progression of Plan Balance

June 30, 2017	\$	7,057
Contributions		-
Withdrawals		-
Net		-
Investment income		32
Net appreciation		653
June 30, 2017	\$	<u>7,742</u>

Asset Allocation

	Amount	Percent of Total
Domestic Equity	\$ 1,953	25.2%
International Nonqualified	671	8.7
International Equity	1,267	16.4
Total Return Fixed Income	749	9.7
Core Fixed Income	327	4.2
Private Markets	1,923	24.8
Hedge Fund	852	11.0
Total	<u>\$ 7,742</u>	<u>100.0%</u>

INVESTMENT PERFORMANCE

The IMB calculates total rates of return using the time-weighted rate of return methodology. The time-weighted method determines the rate of return exclusive of the effects of participant contributions or withdrawals. Actual rates of return are net of fees.

Period	Actual	Target
One-year	9.7%	7.5%

Revenue Shortfall Reserve Fund

HISTORY

The Revenue Shortfall Reserve Fund (Reserve Fund), created under *West Virginia Code §11B-2-20*, is funded from state surplus revenues accrued, if any, during the most recent fiscal year. The first 50 percent of all such surplus revenues are deposited into the Reserve Fund within 60 days of the end of each fiscal year. The deposit of surplus revenue into the Reserve Fund becomes discretionary when the balance in the Reserve Fund meets or exceeds 13 percent of the state's General Revenue Fund Budget for the expiring fiscal year. The West Virginia Legislature is authorized to make an appropriation from the Reserve Fund for revenue shortfalls, for emergency revenue needs caused by acts of God or natural disasters, or for other fiscal needs.

LIQUIDITY NEEDS

The Reserve Fund is intended to be co-managed between the IMB and the West Virginia Board of Treasury Investments. A cash account of \$100 million must be invested throughout the life of the Reserve Fund in cash with the West Virginia Board of Treasury Investments. Any assets in excess of \$100 million will be invested with the IMB. Statute dictates that expenditures will occur out of the Board of Treasury Investments first until those assets are depleted, and then out of the assets managed at the IMB. The West Virginia State Budget Office will monitor these asset balances and will direct both the IMB and the West Virginia Board of Treasury Investments when the transfer of funds is necessary from one to the other.

Future cash outflows are uncertain. The assets may be withdrawn, in whole or in part, at any time as directed by the West Virginia Legislature or by executive order. Historically, cash outflows in similar state funds created for similar purposes have had withdrawals reimbursed by the State within each fiscal year.

INVESTMENT OBJECTIVES (for the assets managed by the IMB)

The investment objective is to provide for preservation of principal and minimization of volatility. There is no specifically identified target rate of return, as the Reserve Fund is a perpetual, endowment-like fund with no anticipated or scheduled liabilities.

ASSET ALLOCATION

Based upon a determination of the appropriate risk tolerance, the Board adopted the following broad asset allocation guidelines for the assets managed for the Reserve Fund. Base and Strategic Allocations are established on a market value basis.

Asset Class	Base Allocation	Strategic Allocation**
Fixed Income	100.0%	50.0%
TIPS	0.0%	50.0%
Cash	\$0*	

* *Statutory cash requirements of \$100 million will be invested by the West Virginia Board of Treasury Investments. IMB Staff has authority to change the cash target up to 5 percent, as necessary, in consultation with the appropriate representative(s) from the Reserve Fund.*

** *The Allocation Committee has the authority to change the allocation within an established range around the Strategic Allocation for the fixed income asset class. The range authority for fixed income is defined in the IMB's Investment Policy Statement for the Fixed Income Pool (Appendix C).*

Revenue Shortfall Reserve Fund

FINANCIAL HIGHLIGHTS (in \$000s)

Progression of Plan Balance

June 30, 2017	\$	145,150
Contributions		21,000
Withdrawals		-
Net		<u>21,000</u>
Investment income		2,256
Net depreciation		(740)
June 30, 2018	\$	<u><u>167,666</u></u>

Asset Allocation

	Amount	Percent of Total
Total Return Fixed Income	\$ 57,878	34.5%
Core Fixed Income	25,130	15.0
TIPS	84,658	50.5
Total	<u>\$ 167,666</u>	<u>100.0%</u>

INVESTMENT PERFORMANCE

The IMB calculates total rates of return using the time-weighted rate of return methodology. The time-weighted method determines the rate of return exclusive of the effects of participant contributions or withdrawals. Actual rates of return are net of fees. A target rate of return has not been set for this plan.

Period	Actual
One-year	1.2%
Three-year	2.1%
Five-year	2.2%
Ten-year	2.2%

Revenue Shortfall Reserve Fund – Part B

HISTORY

The Revenue Shortfall Reserve Fund - Part B (Reserve Fund - Part B), created under *West Virginia Code §11B-2-20*, was funded using the entire balance of the assets in the former Tobacco Settlement Medical Trust Fund. The West Virginia Legislature is authorized and may make expenditures from the Reserve Fund - Part B for the purposes set forth in *West Virginia Code §4-11A-3* or in instances of revenue shortfalls or fiscal emergencies of an extraordinary nature.

LIQUIDITY NEEDS

The Reserve Fund - Part B is intended to experience no cash outflows, but this is not entirely certain, as the West Virginia Legislature may appropriate a qualified expenditure as noted above. Cash inflows are expected to be minimal and emanate from insurance tax payments.

INVESTMENT OBJECTIVES

The investment objective is to provide for stable, long-term growth of assets, while seeking to minimize risk of loss. There is no specifically identified rate of return target as the Reserve Fund - Part B is a perpetual, endowment-like fund with no anticipated or scheduled liabilities.

ASSET ALLOCATION

Based upon a determination of the appropriate risk tolerance, the Board adopted the following broad asset allocation guidelines for the assets managed for the Reserve Fund - Part B. Base and Strategic Allocations are established on a market value basis.

Asset Class	Base Allocation	Strategic Allocation**
Domestic Equity	10.0%	11.25%
International Equity	10.0%	11.25%
Fixed Income	80.0%	55.00%
TIPS	0.0%	22.50%
Cash*	0.0%*	

* *IMB Staff has authority to change the cash target up to 5 percent, as necessary, in consultation with the appropriate representative(s) from the Reserve Fund – Part B.*

** *The Allocation Committee has the authority to change the allocation within an established range around the Strategic Allocation for the public equity and fixed income asset classes. The range authority for public equities and fixed income is defined in the IMB’s Investment Policy Statement for the Equity and Fixed Income Pools, respectively (Appendix C).*

Revenue Shortfall Reserve Fund – Part B

FINANCIAL HIGHLIGHTS (in \$000s)

Progression of Plan Balance

June 30, 2017	\$ 425,111
Contributions	-
Withdrawals	-
Net	-
Investment income	6,856
Net appreciation	6,744
June 30, 2018	<u>\$ 438,711</u>

Asset Allocation

	Amount	Percent of Total
Domestic Equity	\$ 49,047	11.3%
International Nonqualified	17,181	3.9
International Equity	31,305	7.1
Total Return Fixed Income	167,777	38.2
Core Fixed Income	72,850	16.6
TIPS	100,551	22.9
Total	<u>\$ 438,711</u>	<u>100.0%</u>

INVESTMENT PERFORMANCE

The IMB calculates total rates of return using the time-weighted rate of return methodology. The time-weighted method determines the rate of return exclusive of the effects of participant contributions or withdrawals. Actual rates of return are net of fees. A target rate of return has not been set for this plan.

Period	Actual
One-year	3.2%
Three-year	4.5%
Five-year	4.7%
Ten-year	4.0%

West Virginia Department of Environmental Protection Agency

HISTORY

The West Virginia Department of Environmental Protection Agency (DEP Agency) was established in 1991, for the primary purpose of protecting the environment and the health and welfare of the public, including providing for the long-term maintenance of certain water control facilities. The DEP Agency has established reserve funds for reclamation efforts related to these areas of responsibility.

LIQUIDITY NEEDS

There are no liquidity needs for the DEP Agency anticipated through fiscal year 2018. After 2018, the DEP Agency anticipates that liquidity needs may increase to fund reclamation activities.

INVESTMENT OBJECTIVES

The investment objectives are as follows:

- Provide adequate liquidity to meet the cash flow requirements.
- Given the expected infinite life of the fund, allow for growth of assets in an amount at least equal to expected inflation.

ASSET ALLOCATION

Based upon a determination of the appropriate risk tolerance, the Board adopted the following broad asset allocation guidelines for the assets managed for the DEP Agency. Base and Strategic Allocations are established on a market value basis.

Asset Class	Base Allocation	Strategic Allocation**
Domestic Equity	20.0%	20.0%
International Equity	20.0%	20.0%
Fixed Income	60.0%	40.0%
Hedge Funds	0.0%	20.0%
Cash	\$0*	

* IMB Staff has authority to change the cash target up to 5 percent, as necessary, in consultation with the appropriate representative(s) from the DEP Agency.

** The Allocation Committee has the authority to change the allocation within an established range around the Strategic Allocation for the public equity and fixed income asset classes. The range authority for public equities and fixed income is defined in the IMB's Investment Policy Statement for the Equity and Fixed Income Pools, respectively (Appendix C).

West Virginia Department of Environmental Protection Agency

FINANCIAL HIGHLIGHTS (in \$000s)

Progression of Plan Balance

June 30, 2017	\$ 151,227
Contributions	36,114
Withdrawals	-
Net	36,114
Investment income	1,952
Net appreciation	6,106
June 30, 2018	\$ 195,399

Asset Allocation

	Amount	Percent of Total
Domestic Equity	\$ 38,287	19.5%
International Nonqualified	12,836	6.6
International Equity	25,044	12.8
Total Return Fixed Income	52,351	26.8
Core Fixed Income	23,184	11.9
Hedge Fund	43,697	22.4
Total	\$ 195,399	100.0%

INVESTMENT PERFORMANCE

The IMB calculates total rates of return using the time-weighted rate of return methodology. The time-weighted method determines the rate of return exclusive of the effects of participant contributions or withdrawals. Actual rates of return are net of fees. A target rate of return has not been set for this plan.

Period	Actual
One-year	5.6%
Three-year	5.3%

West Virginia Department of Environmental Protection Trust

HISTORY

The West Virginia Department of Environmental Protection Trust (DEP Trust) was established on January 29, 2010, for the primary purpose of protecting the environment and the health and welfare of the public, including providing for the long-term maintenance of certain water control facilities. The DEP Trust seeks to provide an economical way by which funds contributed for that purpose may be invested and managed. The sole trustee of the DEP Trust is the Treasurer of the State of West Virginia. The beneficiary of the DEP Trust is the West Virginia Department of Environmental Protection. The DEP Trust began investing funds with the IMB on May 27, 2011.

LIQUIDITY NEEDS

There are limited liquidity needs for the DEP Trust going forward, based on historical actual needs incurred by the DEP Trust, adjusted for inflation.

INVESTMENT OBJECTIVES

The investment objectives are as follows:

- Meet or exceed 7.0 percent per annum. This is the discount rate by the DEP Trust and the Federal Office of Surface Mining in determining the amount of assets invested in the DEP Trust.
- Achieve long-term growth by investing the DEP Trust in a well-diversified portfolio.
- Achieve a real rate of return that is high enough to protect the purchasing power of the DEP Trust.

ASSET ALLOCATION

Based upon a determination of the appropriate risk tolerance, the Board adopted the following broad asset allocation guidelines for the assets managed for the DEP Trust. Base and Strategic Allocations are established on a market value basis.

Asset Class	Base Allocation	Strategic Allocation**
Domestic Equity	32.5%	32.5%
International Equity	32.5%	32.5%
Fixed Income	35.0%	15.0%
Hedge Funds	0.0%	20.0%
Cash	\$0*	

* IMB Staff has authority to change the cash target up to 5 percent, as necessary, in consultation with the appropriate representative(s) from the DEP Trust.

** The Allocation Committee has the authority to change the allocation within an established range around the Strategic Allocation for the public equity and fixed income asset classes. The range authority for public equities and fixed income is defined in the IMB's Investment Policy Statement for the Equity and Fixed Income Pools, respectively (Appendix C).

West Virginia Department of Environmental Protection Trust

FINANCIAL HIGHLIGHTS (in \$000s)

Progression of Plan Balance

June 30, 2017	\$	9,044
Contributions		-
Withdrawals		(136)
Net		(136)
Investment income		40
Net appreciation		710
June 30, 2018	\$	9,658

Asset Allocation

	Amount	Percent of Total
Domestic Equity	\$ 3,089	32.0%
International Nonqualified	1,048	10.9
International Equity	2,017	20.9
Total Return Fixed Income	917	9.5
Core Fixed Income	419	4.3
Hedge Fund	2,168	22.4
Total	\$ 9,658	100.0%

INVESTMENT PERFORMANCE

The IMB calculates total rates of return using the time-weighted rate of return methodology. The time-weighted method determines the rate of return exclusive of the effects of participant contributions or withdrawals. The actual rate of return is net of fees.

Period	Actual	Target
One-year	8.4%	7.0%
Three-year	6.9%	7.0%
Five-year	8.2%	7.0%

West Virginia Prepaid Tuition Trust Fund

HISTORY

The West Virginia Prepaid Tuition Trust Fund (Tuition Trust) was established in 1997 with the objective of enhancing and improving higher education in the State. This is accomplished by providing individuals and organizations a means for paying future college tuition and fees in advance at a rate set at current levels.

Effective March 2003, the Fund was closed to new contracts unless or until the Legislature authorizes the Fund to reopen. During fiscal year 2015, the West Virginia College Prepaid Tuition and Savings Program Board of Trustees voted to close the Prepaid Tuition Plan on June 30, 2022. Any funds not distributed to account holders or beneficiaries who cannot be located at that time will be transferred to the West Virginia Unclaimed Property Division where the rightful owner can claim the funds at any time. The unclaimed funds will cease to be the responsibility of the Program.

LIQUIDITY NEEDS

There are rising liquidity needs for the Tuition Trust. Benefits and expenses will exceed receipts from participants' monthly payments on prepaid tuition contracts at an increasing rate in future years. Under normal economic conditions and funding scenarios the Tuition Trust's assets are expected to be depleted by 2020.

INVESTMENT OBJECTIVES

The investment objectives are as follows:

- Meet or exceed the investment return assumption of 3.1 percent per annum, net of fees.
- Preservation of capital.

ASSET ALLOCATION

Based upon a determination of the appropriate risk tolerance, the Board adopted the following broad asset allocation guidelines for the assets managed for the Tuition Trust. Base and Strategic Allocations are established on a market value basis.

Asset Class	Base Allocation	Strategic Allocation**
Fixed Income	80.0%	80.0%
Cash	20.0%*	20.0%

** IMB Staff has authority to change the cash allocation plus or minus 10 percent, as necessary, in consultation with the appropriate representative(s) from the Tuition Trust.*

West Virginia Prepaid Tuition Trust Fund

FINANCIAL HIGHLIGHTS (in \$000s)

Progression of Plan Balance

June 30, 2017	\$ 49,025
Contributions	-
Withdrawals	(9,000)
Net	<u>(9,000)</u>
Investment income	782
Net appreciation	1,449
June 30, 2018	<u>\$ 42,256</u>

Asset Allocation

	Amount	Percent of Total
Short-Term Fixed Income	\$ 1,003	2.4%
Total Return Fixed Income	20,512	48.5
Core Fixed Income	20,741	49.1
Total	<u>\$ 42,256</u>	<u>100.0%</u>

INVESTMENT PERFORMANCE

The IMB calculates total rates of return using the time-weighted rate of return methodology. The time-weighted method determines the rate of return exclusive of the effects of participant contributions or withdrawals. Actual rates of return are net of fees.

Period	Actual	Target
One-year	4.7%	3.1%
Three-year	6.2%	3.1%
Five-year	7.0%	3.1%
Ten-year	6.7%	3.1%

Wildlife Endowment Fund

HISTORY

The Wildlife Endowment Fund (WEF) was created in 1986 to supplement the Division of Natural Resources' annual budget in support of various statewide projects.

LIQUIDITY NEEDS

The liquidity needs of the WEF will be set on an annual basis and determined by a separate Wildlife Endowment Board as established by West Virginia State Code.

INVESTMENT OBJECTIVES

The investment objectives are as follows:

- Achieve a total rate of return of at least 6.0 percent per annum, net of fees.
- Provide adequate liquidity to meet cash flow requirements.

ASSET ALLOCATION

Based upon a determination of the appropriate risk tolerance, the Board adopted the following broad asset allocation guidelines for the assets managed for the WEF. Base and Strategic Allocations are established on a market value basis.

Asset Class	Base Allocation	Strategic Allocation**
Domestic Equity	30.0%	27.5%
International Equity	30.0%	27.5%
Private Equity	0.0%	10.0%
Fixed Income	40.0%	15.0%
Opportunistic Income	0.0%	0.0%
Hedge Fund	0.0%	10.0%
Real Estate	0.0%	10.0%
Cash	\$0*	

* IMB Staff has authority to change the cash target up to 5 percent, as necessary, in consultation with the appropriate representative(s) from the WEF.

** The Allocation Committee has the authority to change the allocation within an established range around the Strategic Allocation for the public equity, fixed income, and opportunistic income asset classes. The range authority for public equities and fixed income is defined in the IMB's Investment Policy Statement for the Equity and Fixed Income Pools, respectively (Appendix C). The Base and Strategic Allocations to opportunistic income are 0%, but the Allocation Committee has the authority to make a range allocation of up to 5% to this asset class. Private Equity, Opportunistic Income, and Real Estate together comprise the Private Markets Pool.

Wildlife Endowment Fund

FINANCIAL HIGHLIGHTS (in \$000s)

Progression of Plan Balance

June 30, 2017	\$ 63,883
Contributions	829
Withdrawals	(6,804)
Net	<u>(5,975)</u>
Investment income	272
Net appreciation	5,643
June 30, 2018	<u><u>\$ 63,823</u></u>

Asset Allocation

	Amount	Percent of Total
Domestic Equity	\$ 16,104	25.3%
International Nonqualified	5,825	9.1
International Equity	10,105	15.8
Short-Term Fixed Income	59	0.1
Total Return Fixed Income	6,174	9.7
Core Fixed Income	2,710	4.2
Private Markets	15,829	24.8
Hedge Fund	7,017	11.0
Total	<u><u>\$ 63,823</u></u>	<u><u>100.0%</u></u>

INVESTMENT PERFORMANCE

The IMB calculates total rates of return using the time-weighted rate of return methodology. The time-weighted method determines the rate of return exclusive of the effects of participant contributions or withdrawals. Actual rates of return are net of fees.

Period	Actual	Target
One-year	9.7%	6.0%
Three-year	8.3%	6.0%
Five-year	9.2%	6.0%
Ten-year	7.7%	6.0%
Twenty-year	7.4%	6.0%